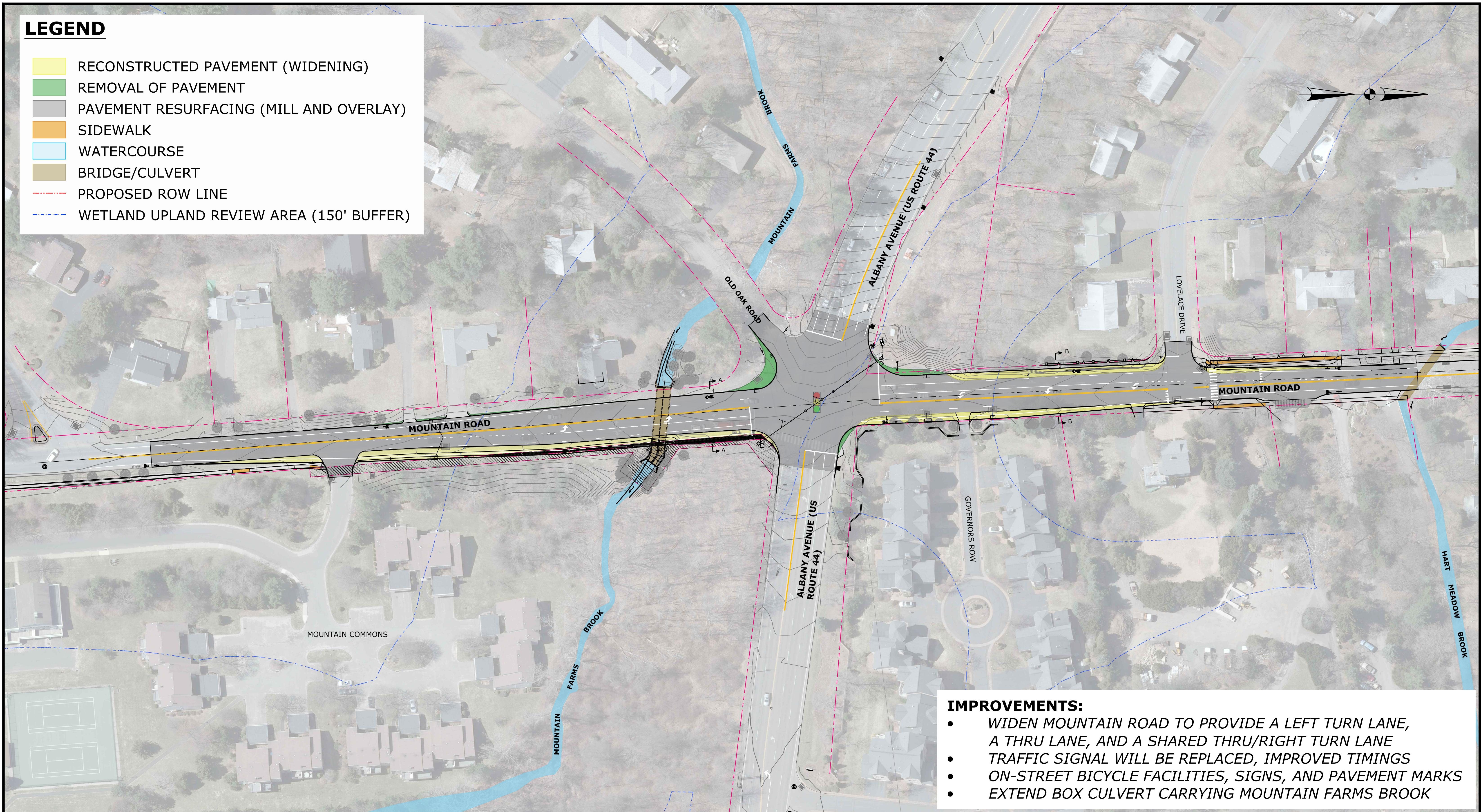


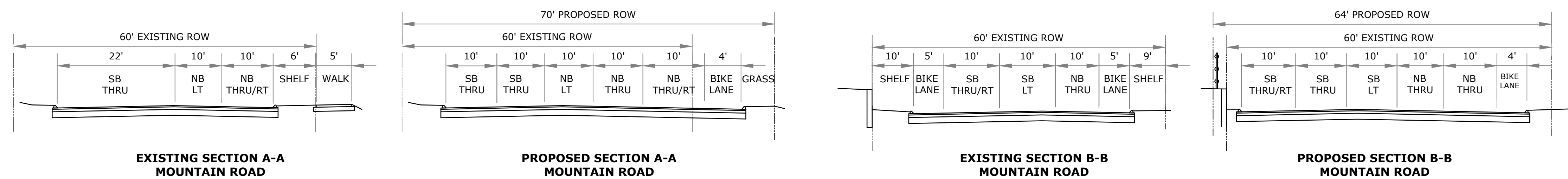
LEGEND

- RECONSTRUCTED PAVEMENT (WIDENING)
- REMOVAL OF PAVEMENT
- PAVEMENT RESURFACING (MILL AND OVERLAY)
- SIDEWALK
- WATERCOURSE
- BRIDGE/CULVERT
- PROPOSED ROW LINE
- WETLAND UPLAND REVIEW AREA (150' BUFFER)



IMPROVEMENTS:

- WIDEN MOUNTAIN ROAD TO PROVIDE A LEFT TURN LANE, A THRU LANE, AND A SHARED THRU/RIGHT TURN LANE
- TRAFFIC SIGNAL WILL BE REPLACED, IMPROVED TIMINGS
- ON-STREET BICYCLE FACILITIES, SIGNS, AND PAVEMENT MARKS
- EXTEND BOX CULVERT CARRYING MOUNTAIN FARMS BROOK



Questions/ Concerns
Gregory Sommer, PE
 Project Engineer
 860-561-7543
 Greg.Sommer@WestHartfordCT.gov

TOWN OF WEST HARTFORD
DIVISION OF ENGINEERING

PRELIMINARY DESIGN PLAN
 MOUNTAIN ROAD AT ALBANY AVENUE (US RTE 44)
 INTERSECTION IMPROVEMENTS

DATE: OCTOBER 2018 DRAWN BY: G.M.S. SHEET No. 1 OF 1
 SCALE: 1"=50' FILE: Mountain Rd Improvement at Albany.dwg