

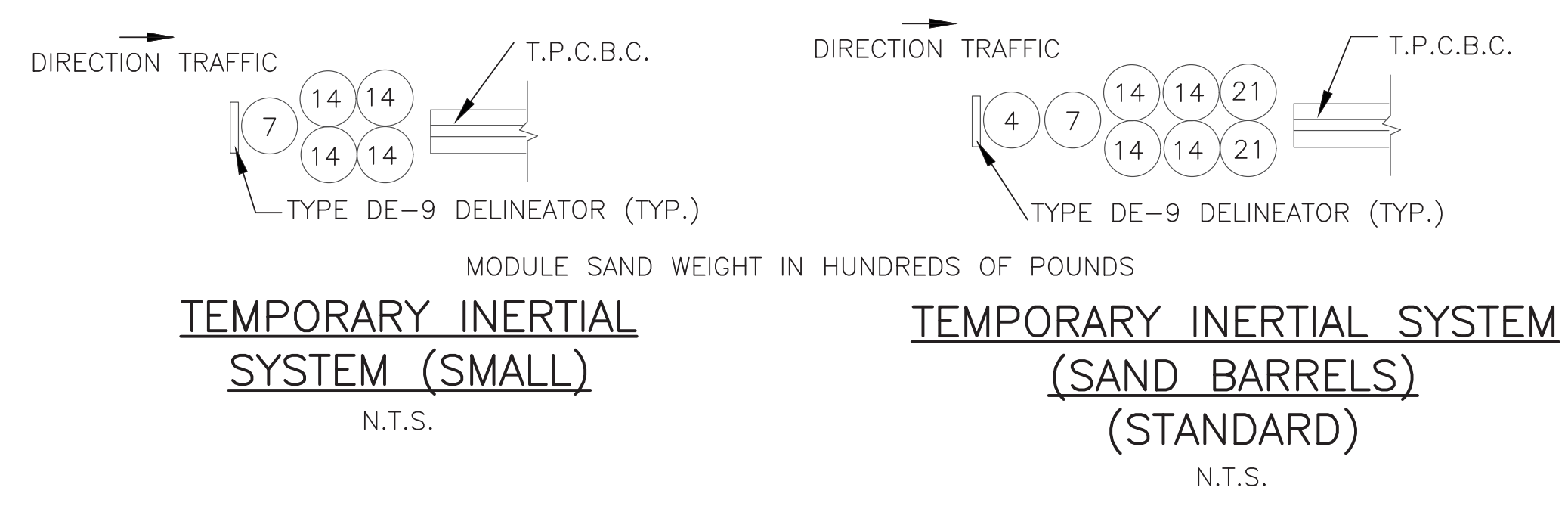
**STAGE I PLAN**  
SCALE: 1" = 40'

**GENERAL NOTES:**

- WHEN EXISTING SIGNAGE AND PAVEMENT MARKINGS CONFLICT WITH THE PROPOSED TRAFFIC PATTERN SHOWN IN THE M&PT PLANS, THE CONTRACTOR SHALL COVER OR REMOVE THOSE CONFLICTING SIGNS. PAVEMENT MARKINGS OR SIGNS MAY ALSO BE TEMPORARILY RELOCATED IF APPROPRIATE FROM THE VIEW OF THE MOTORISTS.
- TWO ADVISORY SIGNS SHALL BE INSTALLED AT ASYLUM AVENUE AND FERN STREET IN ADVANCE OF ALL CONSTRUCTION AND TRAFFIC SHIFTS, ROAD CLOSURES, AND DETOURS AS DIRECTED BY THE ENGINEER.
- THE PORTABLE VMS REQUIRED FOR ROAD CLOSURES SHALL BE INSTALLED AND IN OPERATION FOR AT LEAST TWO (2) WEEKS PRIOR TO THE ROAD CLOSURE.
- SEE SPECIAL PROVISION SECTION 1.08.04 - PROSECUTION AND PROGRESS - LIMITATIONS OF OPERATIONS AND ITEM NO. 0971001A - MAINTENANCE AND PROTECTION OF TRAFFIC FOR ADDITIONAL REQUIREMENTS.
- THE LOCATION OF SERIES 16, ROAD WORK AHEAD AND ROAD WORK AHEAD FINES DOUBLED SIGNING SHALL BE VERIFIED IN THE FIELD BY THE ENGINEER THEN INSTALLED BY THE CONTRACTOR PRIOR TO THE BEGINNING OF CONSTRUCTION ACTIVITIES.
- THE LOCATION OF TRAFFIC DRUMS SHOWN ON THE PLANS ARE APPROXIMATE AND SHALL BE ADJUSTED BY THE CONTRACTOR TO MEET FIELD CONDITIONS AND TO CLEARLY DEFINE ACCESS TO AND EGRESS FROM ALL ROADWAYS AND DRIVEWAYS.
- THE CONTRACTOR SHALL MAINTAIN PEDESTRIAN WALKWAYS AT ALL TIMES THROUGH OR AROUND WORK AREA DURING CONSTRUCTION. WHEN THE CONTRACTOR MAINTAINS A TEMPORARY OR EXISTING WALKWAY IN PROXIMITY TO A WORK AREA, THE CONTRACTOR SHALL SUBMIT TO THE ENGINEER A WORKING PLAN AND DETAILS SHOWING HOW THE CONTRACTOR PLANS TO PROTECT THE PEDESTRIANS.
- ALL CONSTRUCTION SIGN LOCATIONS ARE APPROXIMATE AND SHALL BE FIELD VERIFIED BY THE ENGINEER PRIOR TO INSTALLATION. SIGN HEIGHTS & LATERAL CLEARANCES SHALL ALSO BE FIELD VERIFIED BY THE ENGINEER. ALL PORTABLE SIGN SUPPORTS SHALL CONFORM TO NCHRP REPORT 350.
- SIGNS AND PAVEMENT MARKINGS SHOWN ON THESE PLANS SHALL BE INSTALLED PRIOR TO SHIFTING TRAFFIC.
- PRIOR TO CLOSURE OF ANY LOCAL STREET, THE CONTRACTOR MUST CONTACT THE TOWN OF WEST HARTFORD FOR ALLOWABLE CLOSURE PERIODS IN ACCORDANCE WITH THE SPECIAL PROVISIONS AND MUST INSTALL ALL DETOUR SIGNS PRIOR TO A ROAD CLOSURE. SEE THE STAGE CONSTRUCTION PLANS FOR SEQUENCE.
- PRIOR TO BEGINNING ANY NIGHT WORK, THE CONTRACTOR SHALL CONTACT THE TOWN OF WEST HARTFORD TO COORDINATE AND OBTAIN ANY REQUIRED PERMITS RELATED TO NIGHT WORK, AS NOTED IN THE SPECIAL PROVISION.
- THE CONTRACTOR SHALL MODIFY EXISTING TRAFFIC SIGNALS OR INSTALL TEMPORARY TRAFFIC SIGNALS AS NECESSARY DURING ALL STAGES TO MAINTAIN SAFE TRAFFIC OPERATIONS DURING CONSTRUCTION. TEMPORARY TRAFFIC CONTROL SIGNAL PLANS WILL NEED TO BE SUBMITTED FOR ANY TEMPORARY REVISIONS TO THE EXISTING TRAFFIC CONTROL SIGNALS AND/OR FOR ANY NEWLY INSTALLED TEMPORARY SIGNALS. PAY ITEM#1118051.
- TEMPORARY SIGNS SHALL BE INSTALLED ON POSTS WHEN FEASIBLE.
- ALL SIGNS FOR CONSTRUCTION WILL BE PAID FOR UNDER ITEM NO. 1220013: CONSTRUCTION SIGNS - BRIGHT FLUORESCENT SHEETING.
- ALL TEMPORARY PAVEMENT MARKINGS DURING WINTER SHUTDOWN TO BE EPOXY OTHERWISE USING HOT APPLIED.
- AN OSTA TRAFFIC SIGNAL PERMIT 155-1501-01 HAS BEEN ISSUED BY THE CT DOT. THE CONTRACTOR SHALL NOTIFY THE TOWN AT LEAST TOWN WEEKS IN ADVANCE OF ACTIVATING SIGNALS AND MAKING ANY CHANGES.

**SYMBOL LEGEND**

- ▣ CONSTRUCTION BARRICADE TYPE III
- I TEMPORARY SIGN SUPPORT
- ⋈ DOUBLE POST SIGN
- ⋆ SINGLE POST SIGN
- ▬ TEMPORARY PRECAST CONCRETE BARRIER CURB
- ← TRAFFIC FLOW
- ▨ WORK AREA
- TRAFFIC DRUM
- CMSS MESSAGE SIGN
- \* \* SIGN TO HAVE BARRICADE WARNING LIGHT-HIGH INTENSITY
- \* SIGNING TO BE INSTALLED AT START OF WORK AND TO REMAIN THROUGHOUT PROJECT COMPLETION
- ▨ TEMPORARY PAVEMENT



**TEMPORARY INERTIAL SYSTEM (SMALL)**  
N.T.S.

**TEMPORARY INERTIAL SYSTEM (SAND BARRELS) (STANDARD)**  
N.T.S.

COPIES OF THIS DOCUMENT WITHOUT A FACSIMILE OF THE SIGNATURE AND AN ORIGINAL EMBOSSED SEAL OR ORIGINAL STAMP IN BLUE OR RED INK OF THE PROFESSIONAL ENGINEER OR LAND SURVEYOR SHALL NOT BE CONSIDERED VALID COPIES.

THIS DOCUMENT IS PREPARED SPECIFICALLY FOR THE CLIENT AND PROJECT DESIGNATED HEREON. MODIFICATION, ALTERATION, REVISION, DUPLICATION, OR USE WITHOUT THE CONSENT OF TECTONIC ENGINEERING, PC IS PROHIBITED. COPYRIGHT 2008 TECTONIC ENGINEERING, PC. ALL RIGHTS RESERVED.



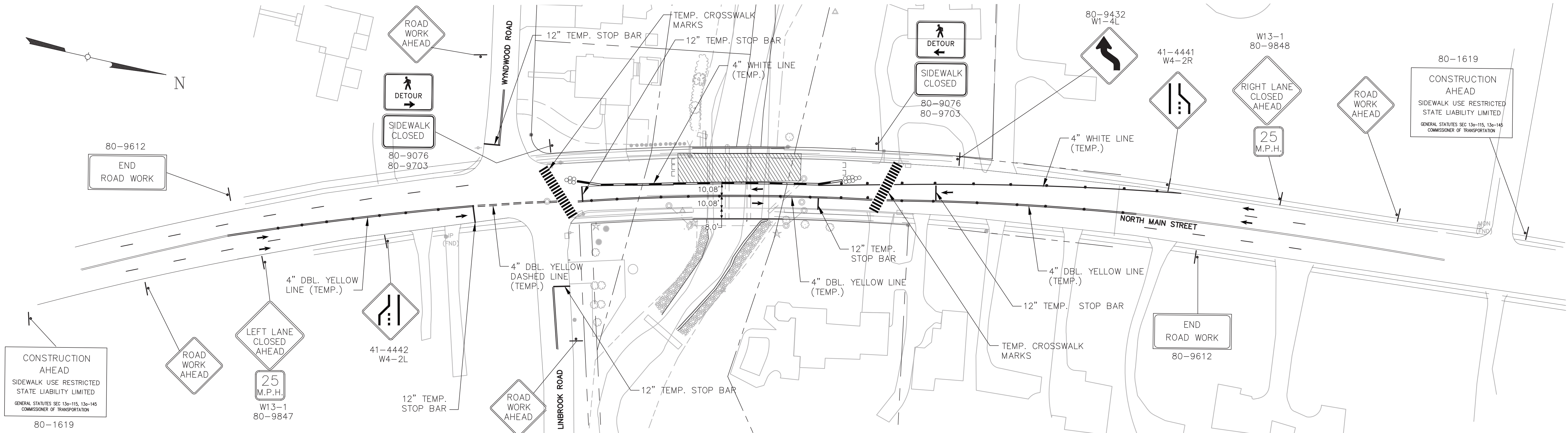
Rev	Date	Revision	Approved	DRAWING CONTROL			
				Designed by: H.H.	Drawn by: K.R.F.	Checked by: J.A.S.	
				Released by:		Date:	
				<input type="radio"/> For Comment			
				<input type="radio"/> For Approval			
				<input type="radio"/> For Bid			
				<input type="radio"/> For Construction			

**TECTONIC** ENGINEERING & SURVEYING CONSULTANTS P.C.  
1344 Sitas Deane Highway, Suite 500  
Rocky Hill, CT 06067

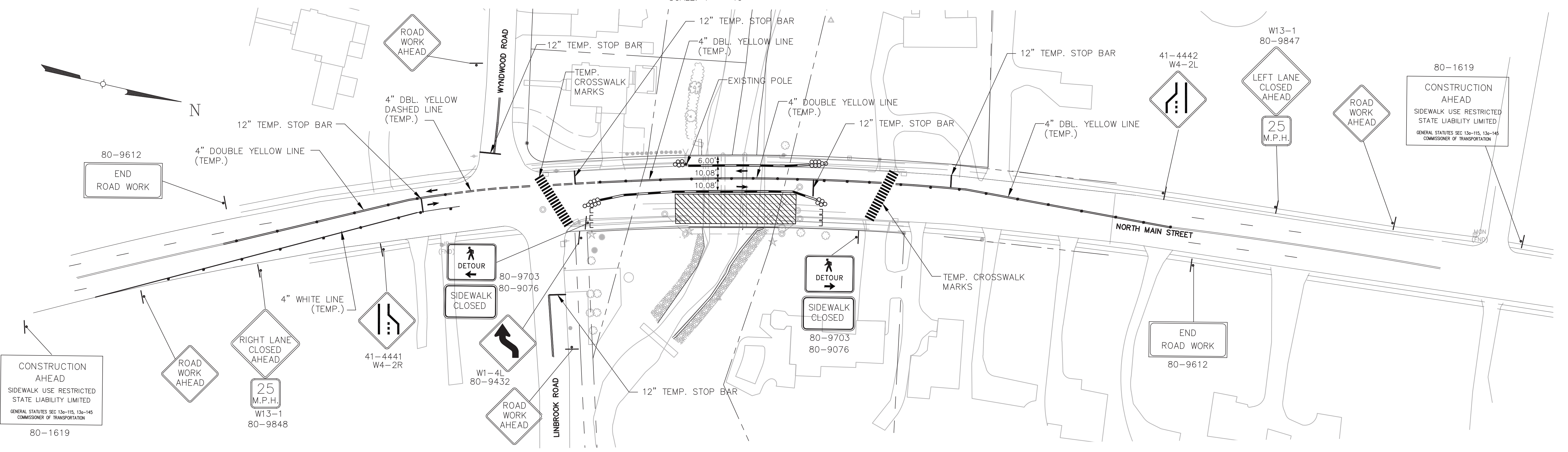
PLANNING  
ENGINEERING  
SURVEYING  
CONSTRUCTION MANAGEMENT

Phone: (860) 563-2341  
Fax: (860) 257-4882  
www.tectoniceengineering.com

MAINTENANCE AND PROTECTION OF TRAFFIC			
<b>REHABILITATION OF BRIDGE NO.03651 OVER WEST BRANCH TROUT BROOK WEST HARTFORD, CONNECTICUT</b>			
Date 3-08-17	Work Order 6550.01	Drawing No. 29	Rev 0



STAGE II PLAN  
SCALE: 1" = 40'



STAGE III PLAN  
SCALE: 1" = 40'

THIS DOCUMENT IS PREPARED SPECIFICALLY FOR THE CLIENT AND PROJECT DESIGNATED HEREON. MODIFICATION, ALTERATION, REVISION, DUPLICATION, OR USE WITHOUT THE CONSENT OF TECTONIC ENGINEERING, P.C. IS PROHIBITED. COPYRIGHT 2008 TECTONIC ENGINEERING, P.C. ALL RIGHTS RESERVED.

COPIES OF THIS DOCUMENT WITHOUT A FACSIMILE OF THE SIGNATURE AND AN ORIGINAL EMBOSSED SEAL OR ORIGINAL STAMP IN BLUE OR RED INK OF THE PROFESSIONAL ENGINEER OR LAND SURVEYOR SHALL NOT BE CONSIDERED VALID COPIES.



Rev	Date	Revision	Approved

DRAWING CONTROL			
Designed by:	H.H.	Drawn by:	K.R.F.
Released by:		Checked by:	J.A.S.
			Date

**TECTONIC** ENGINEERING & SURVEYING CONSULTANTS P.C.  
1344 SITAS DEANE HIGHWAY, SUITE 500  
ROCKY HILL, CT 06067

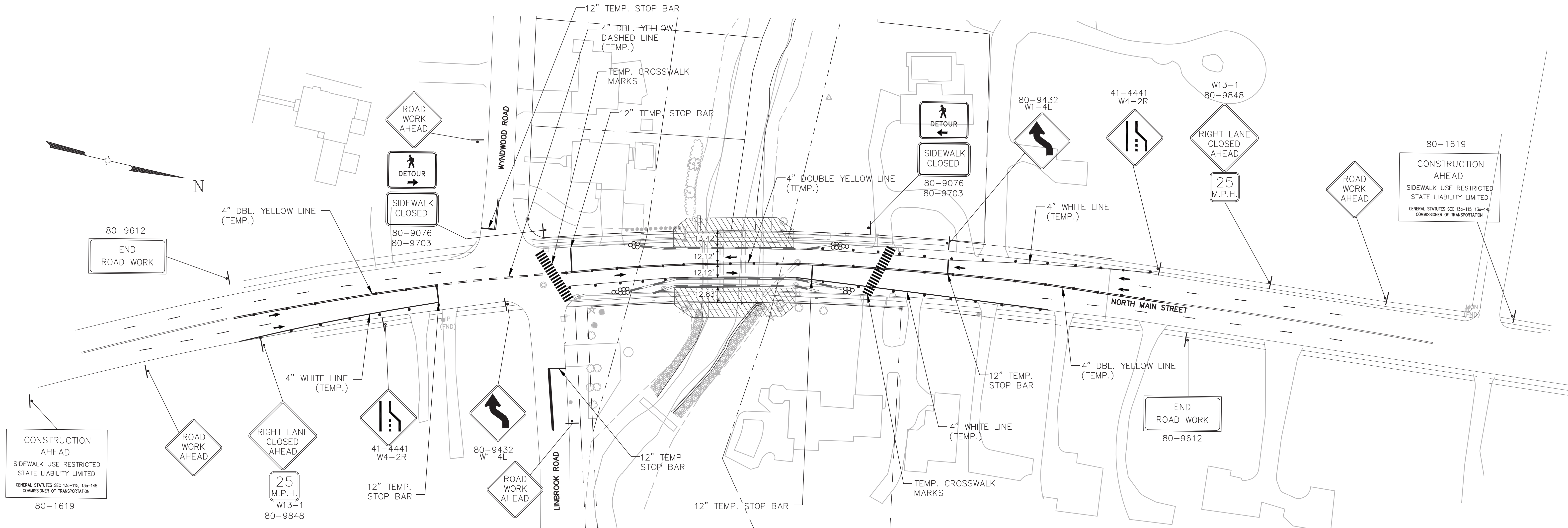
PLANNING  
ENGINEERING  
SURVEYING  
CONSTRUCTION MANAGEMENT

Phone: (860) 563-2341  
Fax: (860) 257-4882  
www.tectonicengineering.com

**MAINTENANCE AND PROTECTION OF TRAFFIC**

**REHABILITATION OF BRIDGE NO.03651  
OVER WEST BRANCH TROUT BROOK  
WEST HARTFORD, CONNECTICUT**

Date	3-08-17	Work Order	6550.01	Drawing No.	30	Rev	0
Scale	AS SHOWN						



**STAGE IV PLAN**  
SCALE: 1" = 40'

NOTE:  
PAVEMENT MARKINGS TO BE RESET TO ORIGINAL CONDITION FROM STATION 18+00 TO STATION 26+00 AFTER STAGE 4 CONSTRUCTION IS COMPLETE.

CONSTRUCTION AHEAD  
SIDEWALK USE RESTRICTED  
STATE LIABILITY LIMITED  
GENERAL STATUTES SEC 13a-115, 13a-145  
COMMISSIONER OF TRANSPORTATION  
80-1619

CONSTRUCTION AHEAD  
SIDEWALK USE RESTRICTED  
STATE LIABILITY LIMITED  
GENERAL STATUTES SEC 13a-115, 13a-145  
COMMISSIONER OF TRANSPORTATION

THIS DOCUMENT IS PREPARED SPECIFICALLY FOR THE CLIENT AND PROJECT DESIGNATED HEREON. MODIFICATION, ALTERATION, REVISION, DUPLICATION, OR USE WITHOUT THE CONSENT OF TECTONIC ENGINEERING, P.C. IS PROHIBITED. COPYRIGHT 2008 TECTONIC ENGINEERING, P.C. ALL RIGHTS RESERVED.

COPIES OF THIS DOCUMENT WITHOUT A FACSIMILE OF THE SIGNATURE AND AN ORIGINAL EMBOSSED SEAL OR ORIGINAL STAMP IN BLUE OR RED INK OF THE PROFESSIONAL ENGINEER OR LAND SURVEYOR SHALL NOT BE CONSIDERED VALID COPIES.

ORIGINAL SIZE IN INCHES

Rev	Date	Revision	Approved

DRAWING CONTROL			
Designed by:	T.C.	Drawn by:	K.R.F.

**TECTONIC** ENGINEERING & SURVEYING CONSULTANTS P.C.  
1344 SITAS DEONE HIGHWAY, SUITE 500  
ROCKY HILL, CT 06067  
PHONE: (860) 563-2341  
FAX: (860) 257-4882  
WWW.TECTONICENGINEERING.COM

**MAINTENANCE AND PROTECTION OF TRAFFIC**

**REHABILITATION OF BRIDGE NO.03651  
NORTH MAIN STREET  
OVER WEST BRANCH TROUT BROOK  
WEST HARTFORD, CONNECTICUT**

Date	3-08-17	Work Order	6550.01	Drawing No.	31	Rev	0
Scale	AS SHOWN						