

# Rehabilitation of North Main Street Bridge At Trout Brook – West Hartford CT

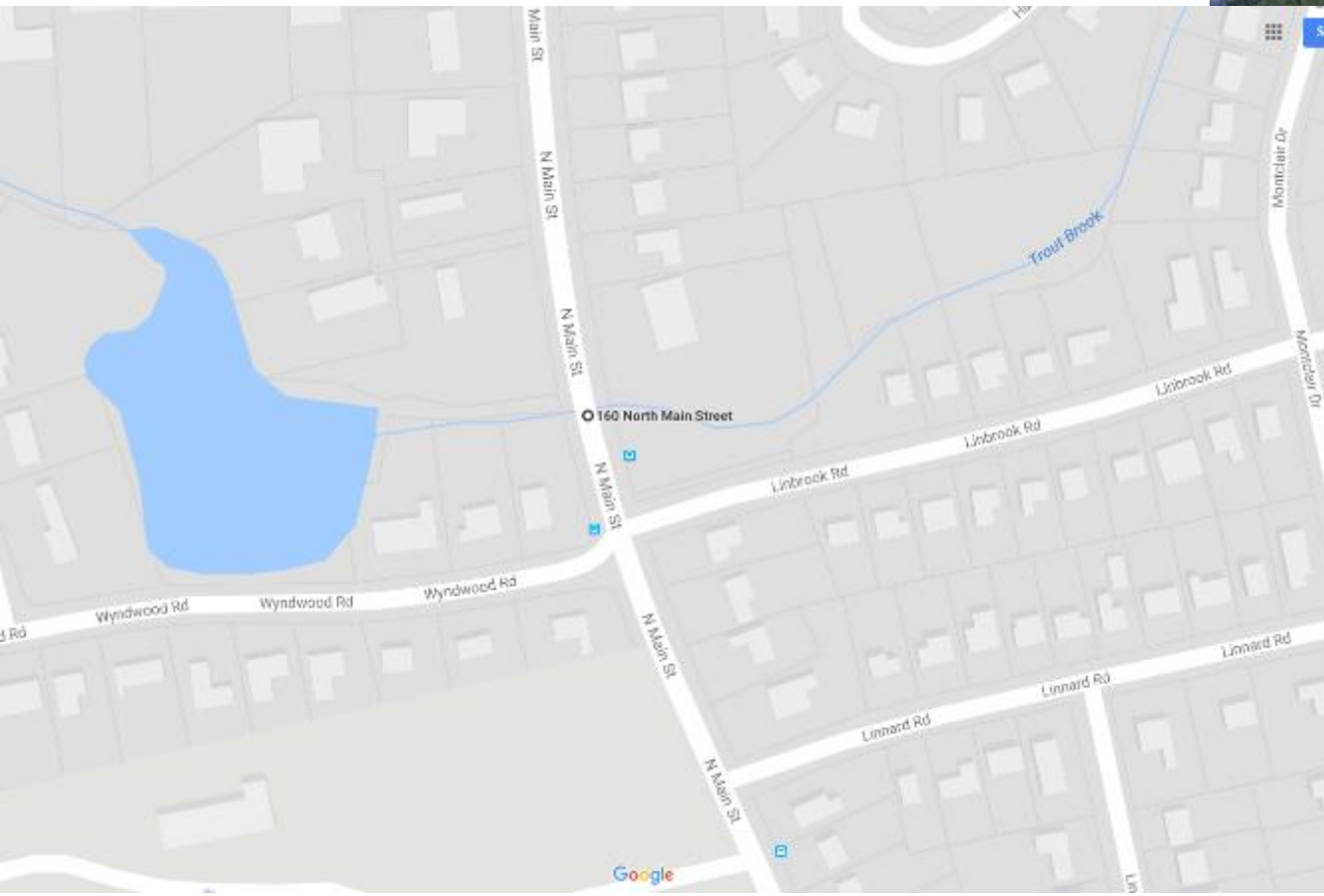
Duane Martin, PE Town Engineer  
Jeff Scala, PE Tectonic Engineering

Tectonic PN: 6550.01

# Introduction

- Town of West Hartford: Duane Martin PE
- Contractor: McNamee Construction, Cody McManama
- Design and Inspection: Tectonic Engineering, Jeff Scala, PE

# Where





# ASD Location

- Approximately 500 feet to  
closest driveway





# Why the Project - Rehabilitation

- Deterioration
- Scour

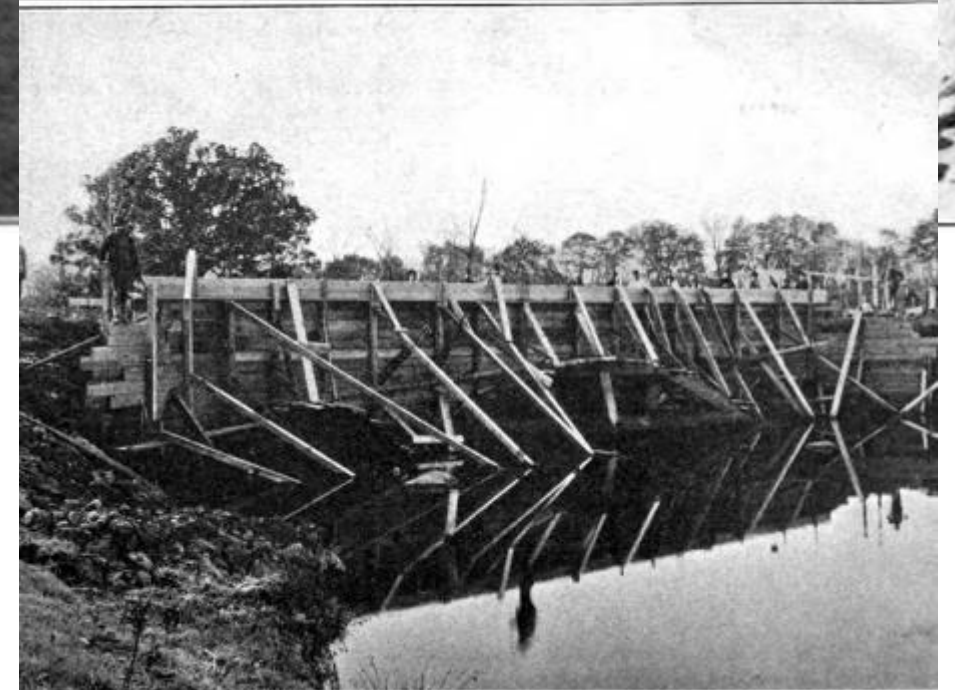
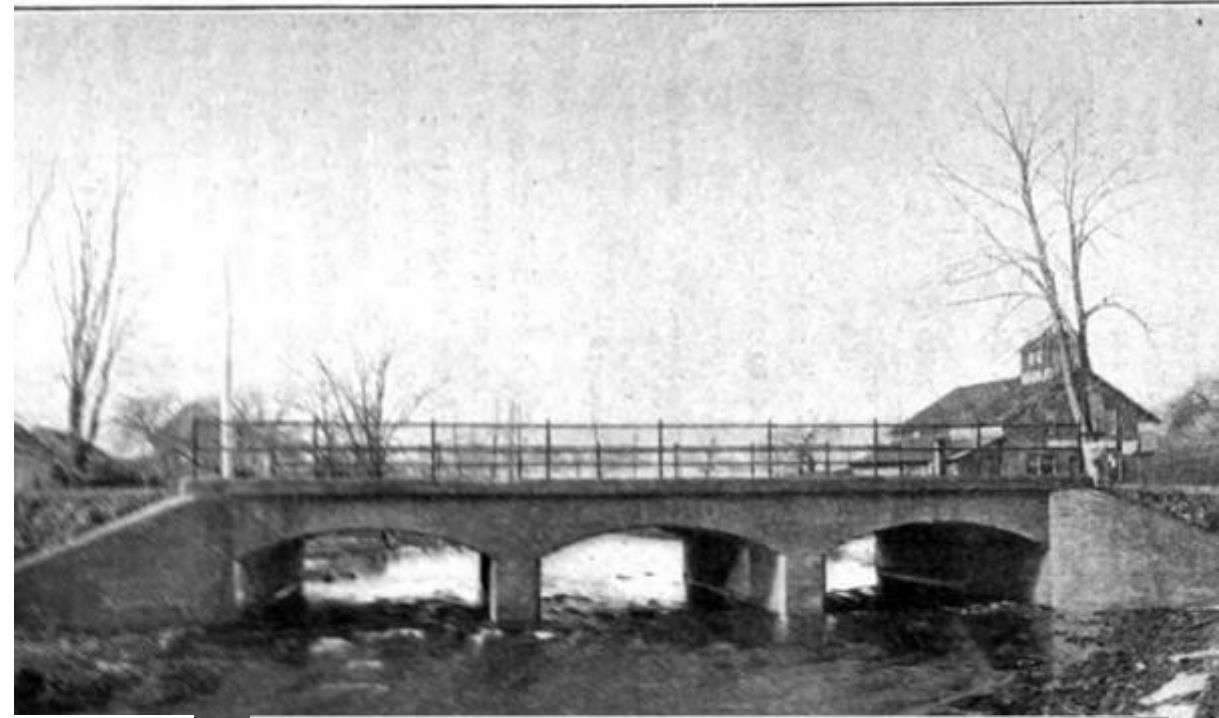


# What – Long Term Improvements

- Concrete repairs
  - Repair construction joints
  - Spalling along abutments and pier
  - Spandrel wall and wingwall replacement
  - Parapet replacement
- Scour countermeasure
  - Shoreblock revetment
  - 12” native material
- Bridge Upgrades
  - Adding concrete roadway
  - Waterproof membrane
- Replace water main
- Aesthetic treatments

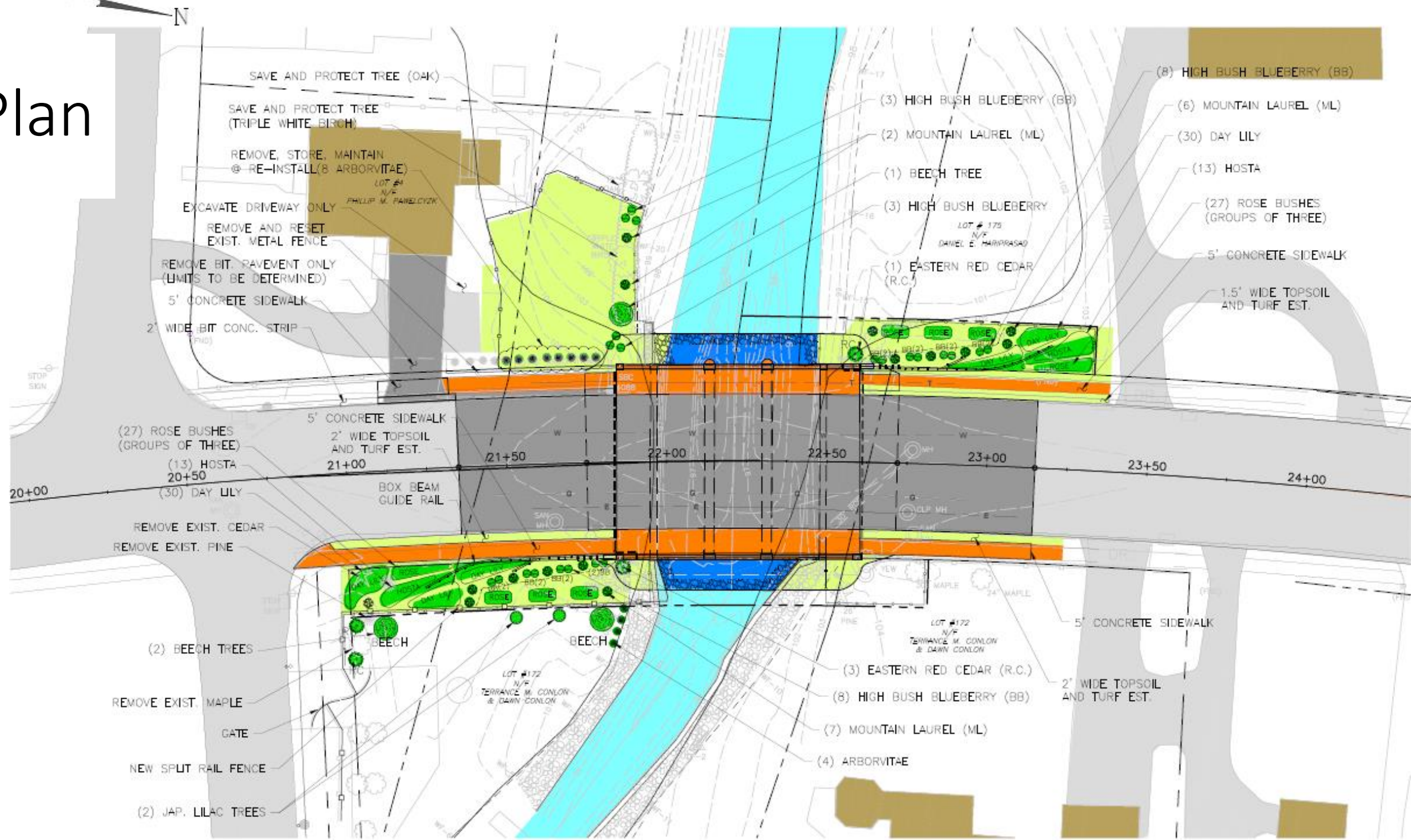
# Historic

- Built 1901
- One of the first reinforced concrete arches
- SHPO Approval



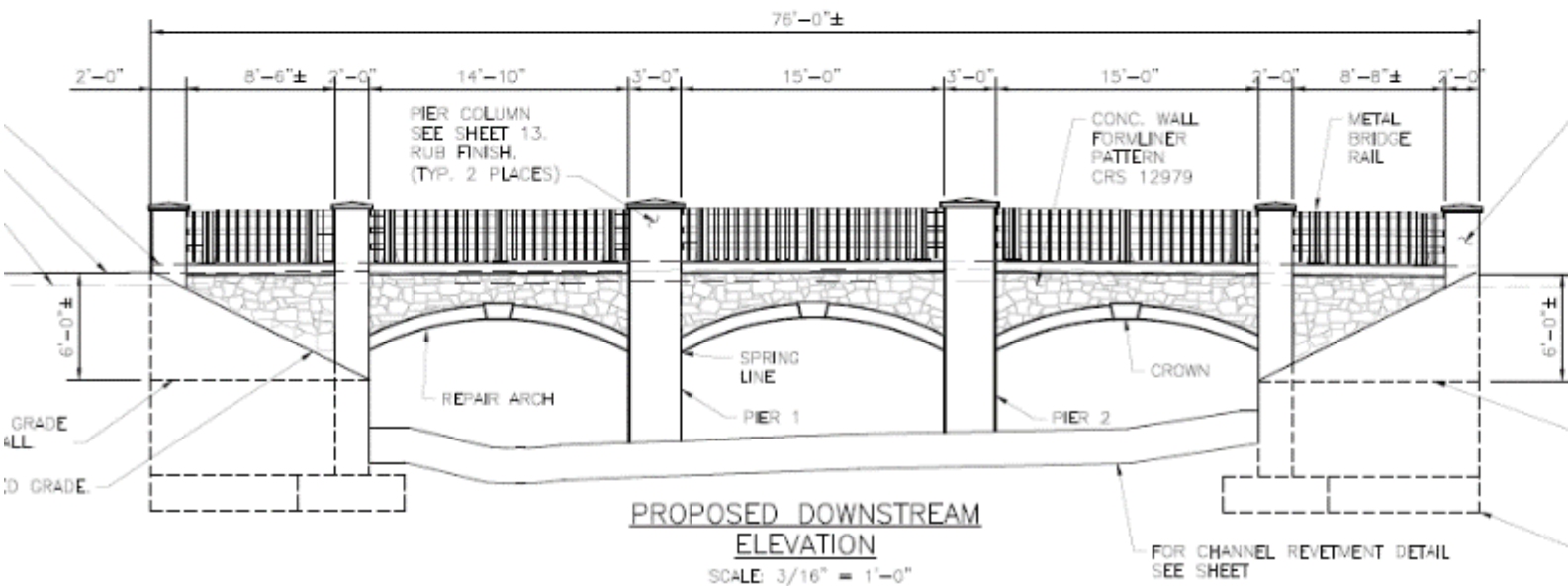
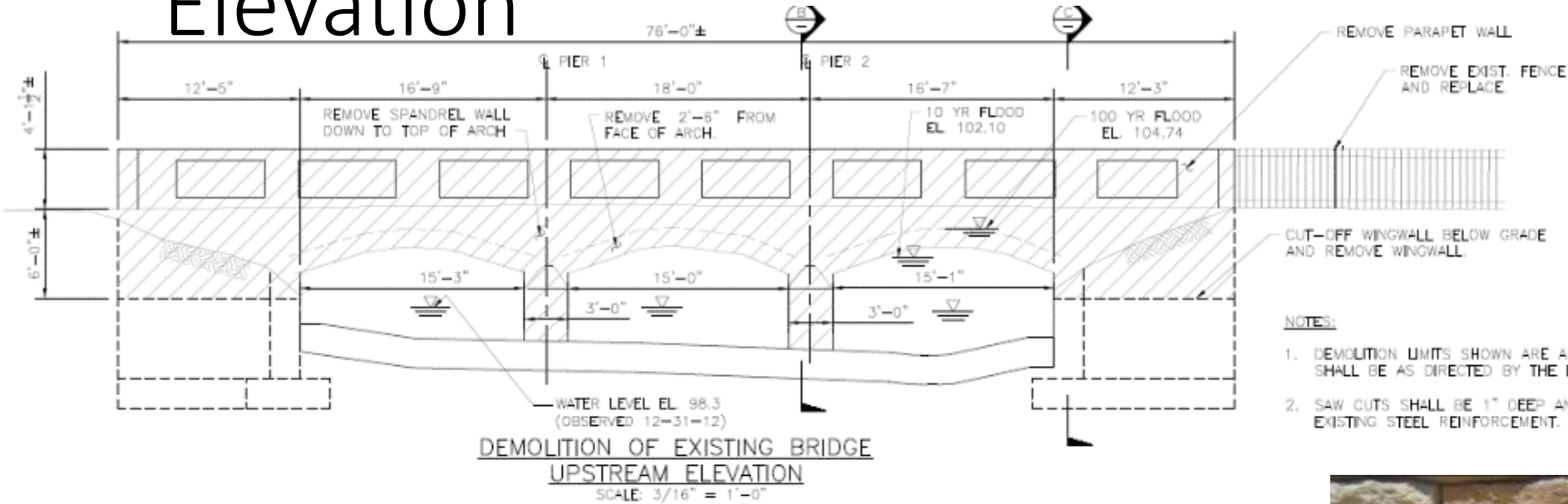


# Plan

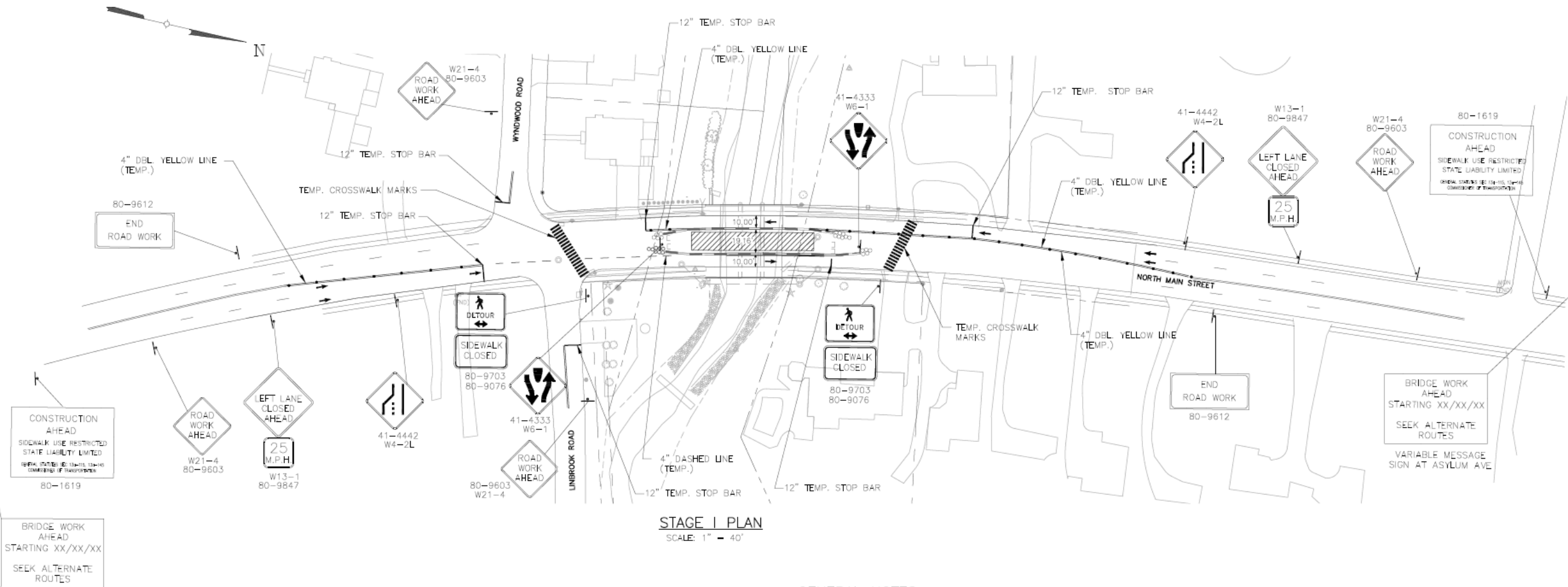




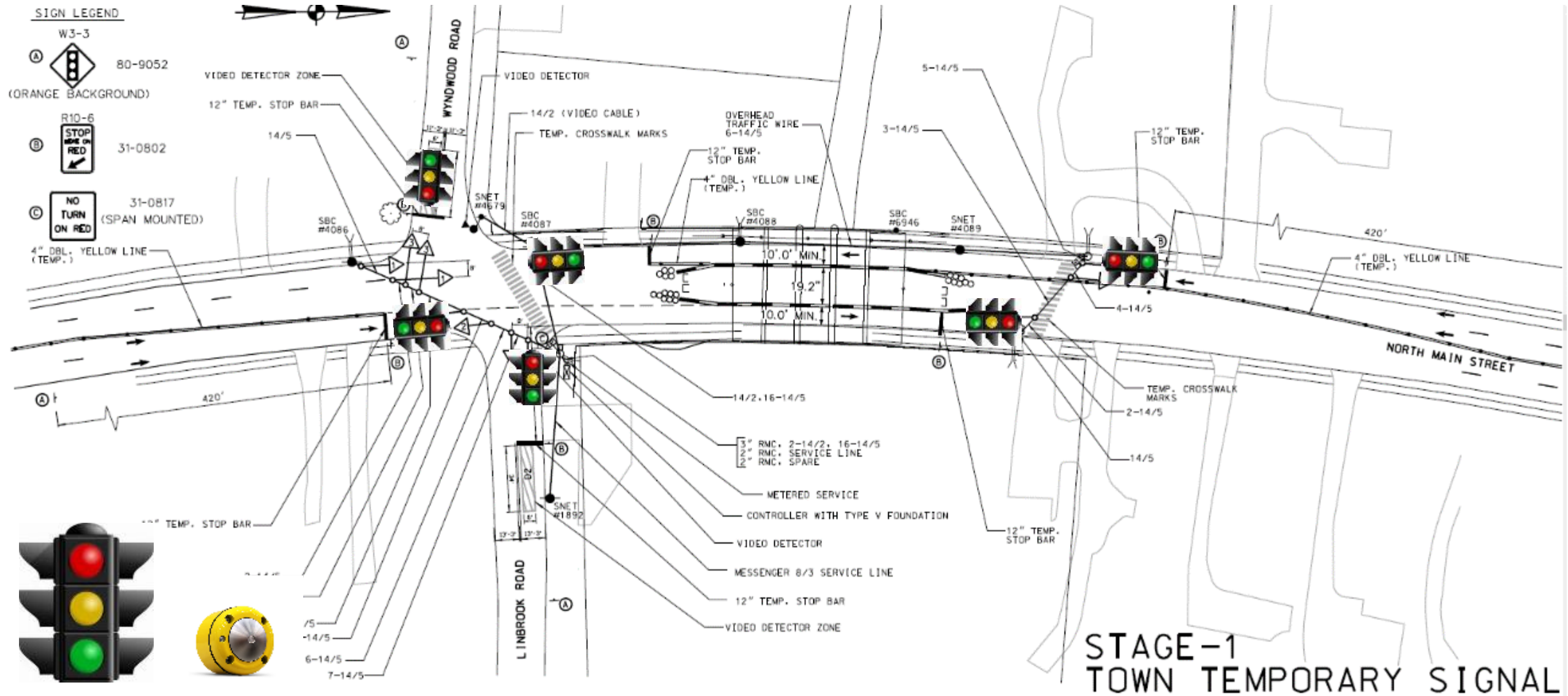
# Elevation



# Stage Construction / Maintenance of Traffic

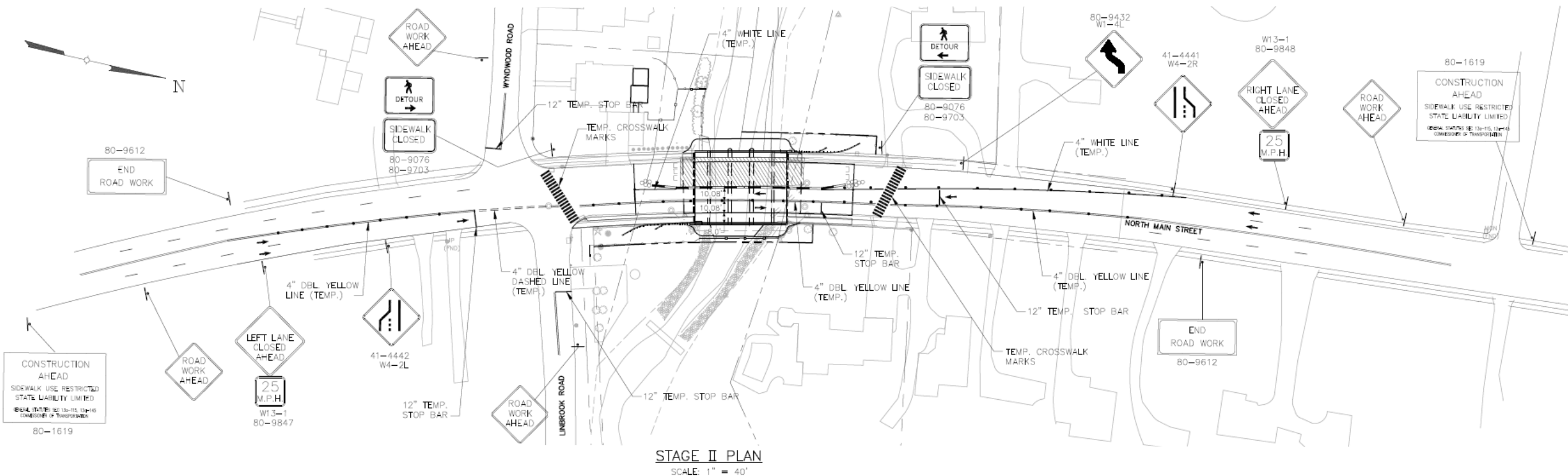


# Stage Construction / Maintenance of Traffic

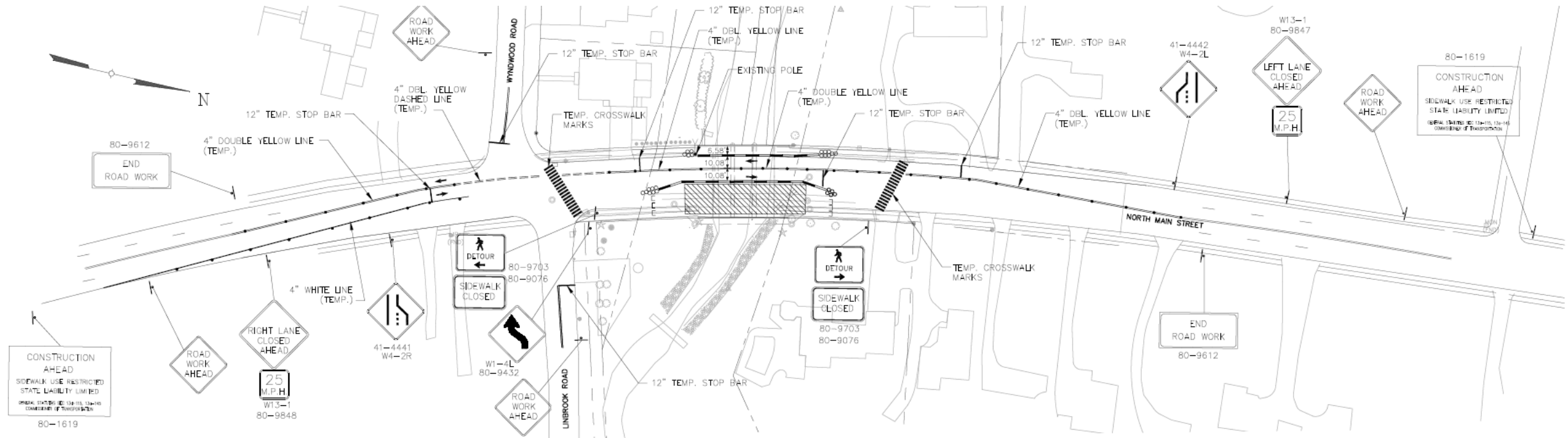




# Stage Construction / Maintenance of Traffic



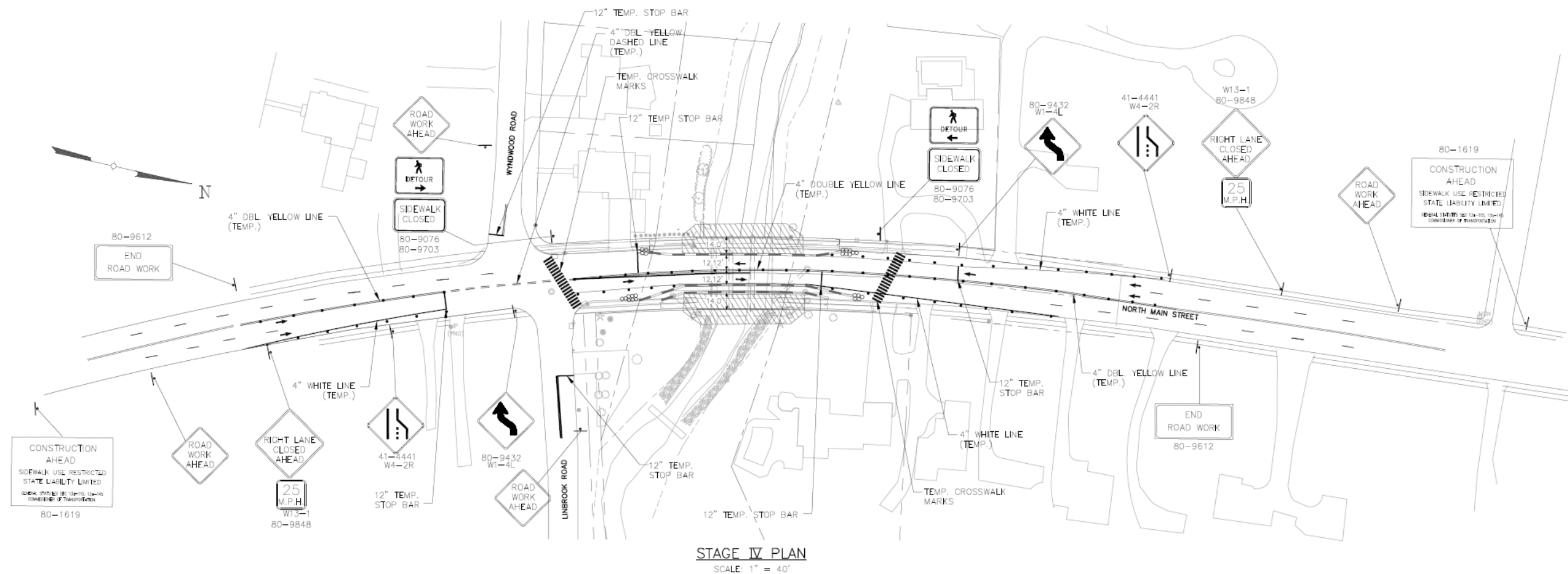
# Stage Construction / Maintenance of Traffic



STAGE III PLAN

SCALE: 1" = 40'

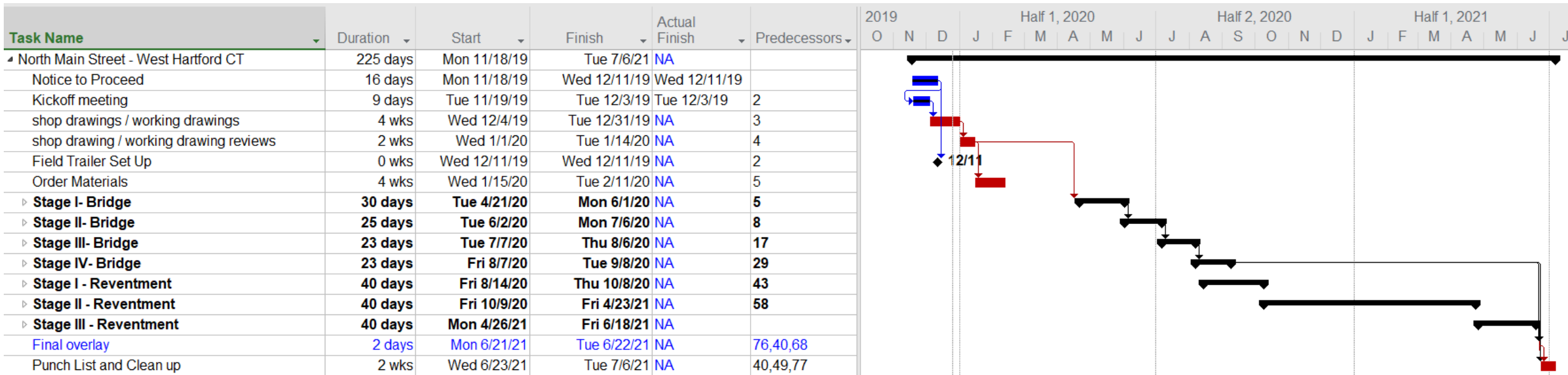
# Stage Construction / Maintenance of Traffic





# Construction Schedule

- Recently bid
- Awarded
- Construction Starting this winter
- Completion: June 2021



# Thank You!



**Duane J. Martin, P.E.**

Town Engineer

Department of Community Development ▪ Engineering Division

50 South Main Street | Room 204 | West Hartford CT 06107 | t 860.561.7539

Town of West Hartford | [www.westhartfordct.gov](http://www.westhartfordct.gov)

---

## Questions?