



Data from West Hartford Bloomfield Health District

Through 10-6-20

All data in this report are preliminary; data for previous dates will be updated.

Total tested: West Hartford = 36457 (3491 new tests since 09-28-20)

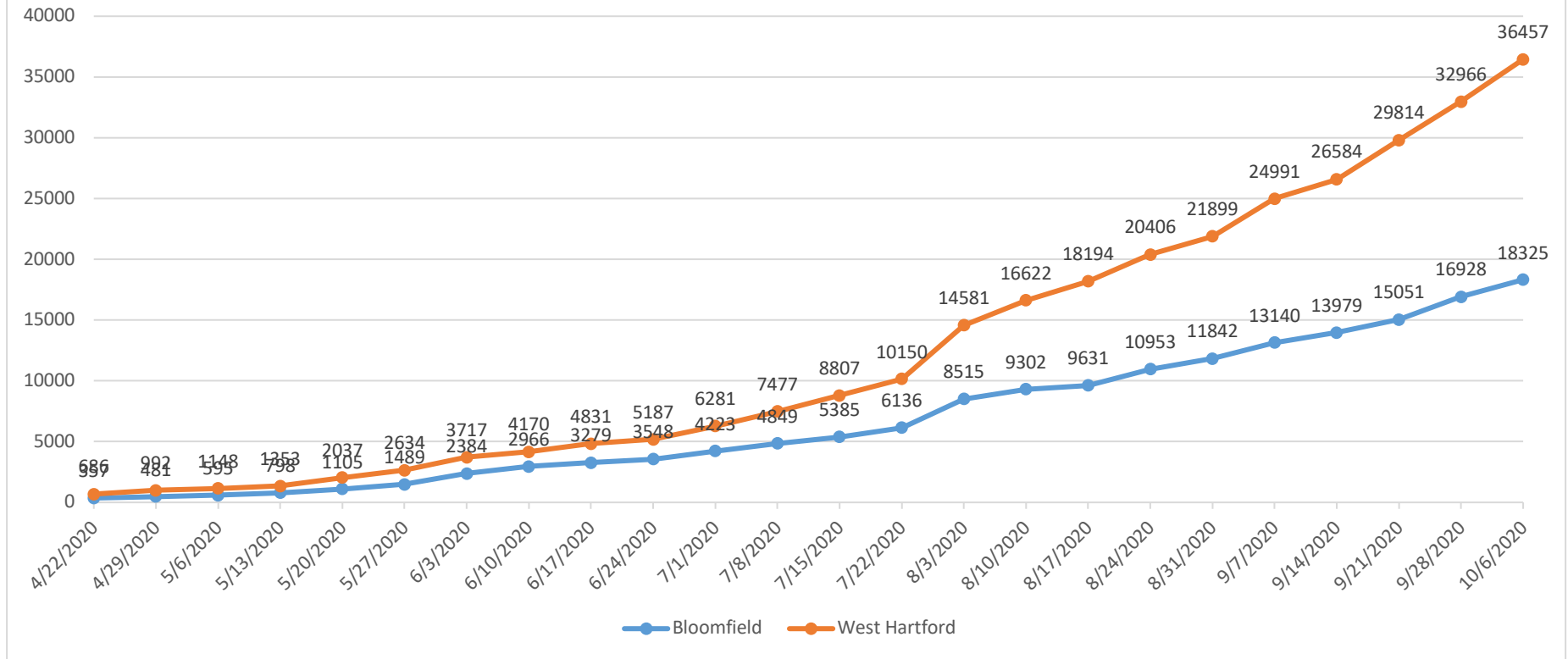
Bloomfield = 18325 (1397 new tests since 9-28-20)

	# new tested 4-22-20	# new tested 4-29-20	# new tested 5-6-20	# new tested 5-13-20	# new tested 5-20-20	# new tested 5-27-20	# new tested 6-3-20	# new tested 6-10-20	# new tested 6-17-20	# new tested 6-24-20
Bloomfield	357	124	114	203	307	384	895	552	313	269
West Hartford	686	306	156	205	684	597	1083	453	661	356

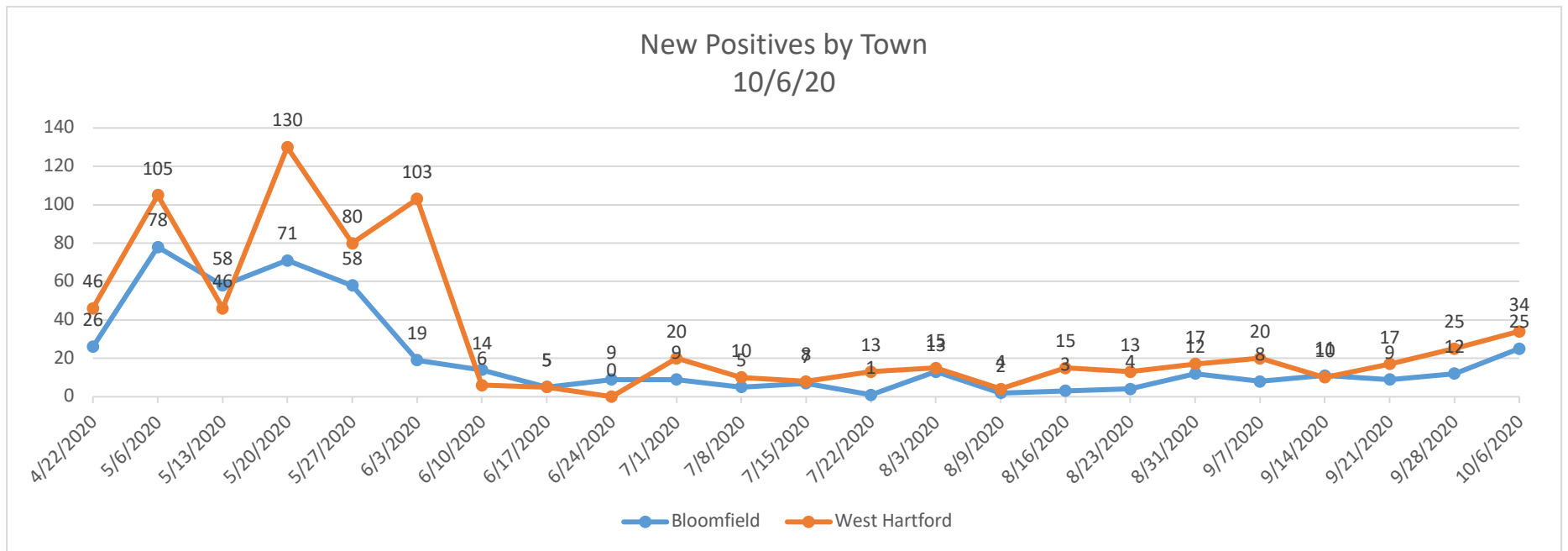
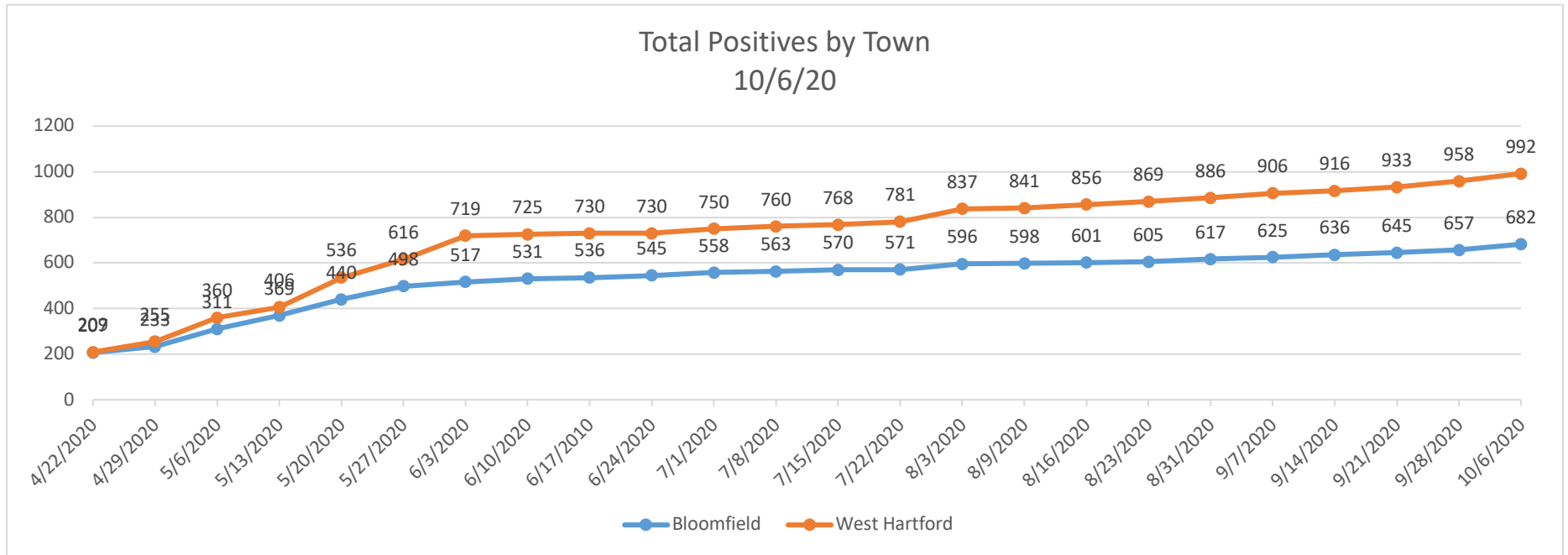
	# new tested 7-1-20	# new tested 7-9-20	# new tested 7-15-20	# new tested 7-22-20	# new tested 8-3-20	# new tested 8-10-20	# new tested 8-17-20	# new tested 8-24-20	# new tested 8-31-20	# new tested 9-7-20	# new tested 9-14-20	# new tested 9-21-20	# new tested 9-28-20
Bloomfield	626	536	751	2389	787	329	1322	889	1658	839	1092	1877	1397
West Hartford	1196	1330	1343	4431	2041	1572	2212	1493	3092	1593	3230	3152	3491

All data are preliminary and subject to change. Updated 10-6-2020.

Total Number Tested by Town 10/6/20



All data are preliminary and subject to change. Updated 10-6-2020.



All data are preliminary and subject to change. Updated 10-6-2020.

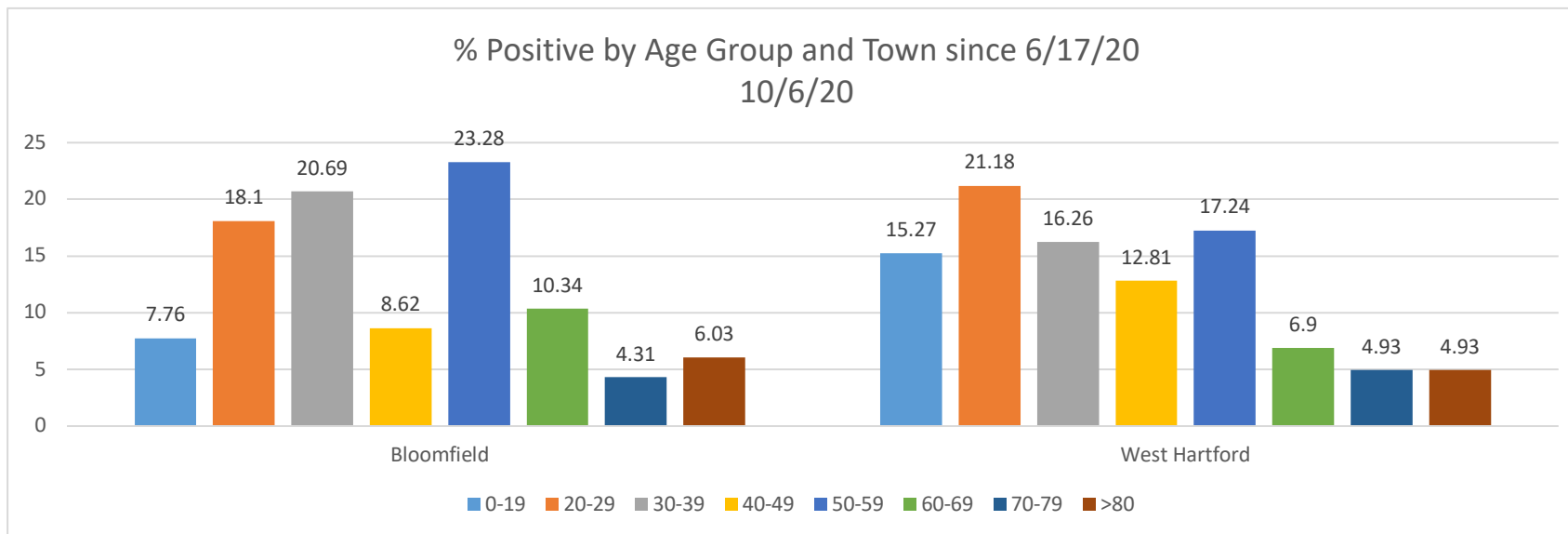
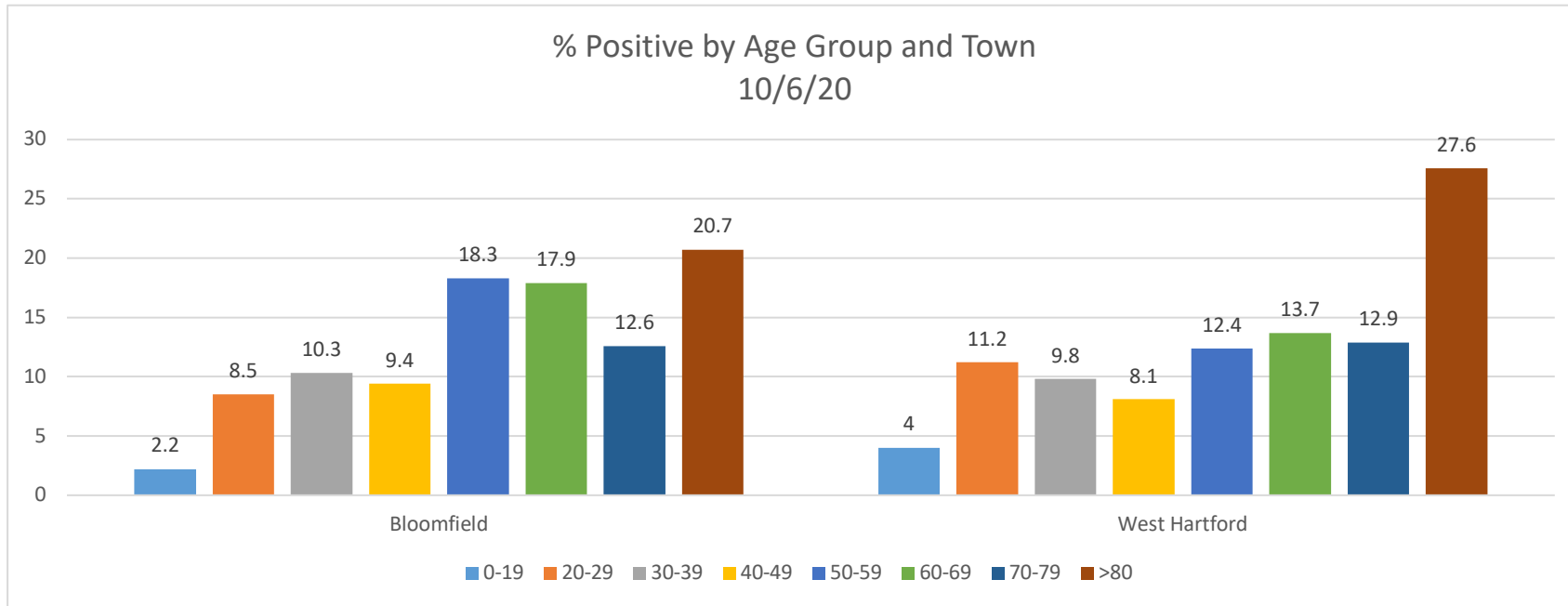
% of tests that are positive from previous week

Town	4-22-20 % tested positive	4-29-20 % tested positive since 4-22-20	5-6-20 % tested positive since 4-29-20	5-13-20 % tested positive since 5-6-20	5-20-20 % tested positive since 5-13-20	5-27-20 % tested positive since 5-20-20	6-3-20 % tested positive since 5-27-20	6-10-20 % tested positive since 6-3-20	6-17-20 % tested positive since 6-10-20	6-24-20 % tested positive since 6-17-20
Bloomfield	59	41.4	43.8	28.5	23.1	15.1	2	2	1.5	3.3
West Hartford	31.1	29.7	35.2	22.0	19	13.4	9	1	.7	0

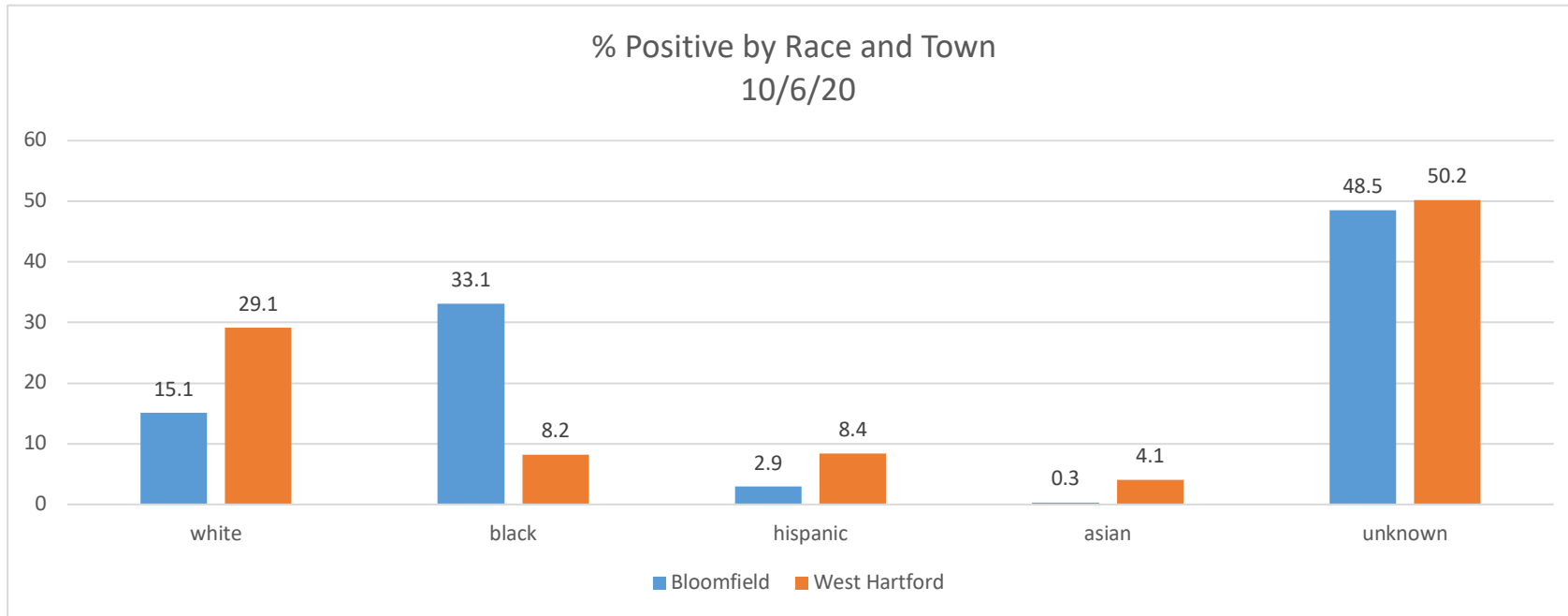
Town	7-1-20 % tested positive since 6-24-20	7-8-20 % tested positive since 7-1-20	7-15-20 % tested positive since 7-9-20	7-22-20 % tested positive since 7-15-20	8-3-20 % tested positive since 7-22-20	8-10-20 % tested positive since 8-3-20	8-17-20 % tested positive since 8-10-20	8-24-20 % tested positive since 8-17-20	8-31-20 % tested positive since 8-24-20	9-7-20 % tested positive since 8-31-20	9-14-20 % tested positive since 9-7-20	9-21-20 % tested positive since 9-14-20
Bloomfield	1.3	.8	1.3	.13	.5	.25	.6	.3	1.3	.4	1.3	.8
West Hartford	1.8	.8	.6	.96	.3	.19	.95	.6	1.1	.6	.62	.5

Town	9-28-20 % tested positive since 9-21-20	10-6-20 % tested positive since 9-28-20			
Bloomfield	.63	1.79			
West Hartford	.79	.97			

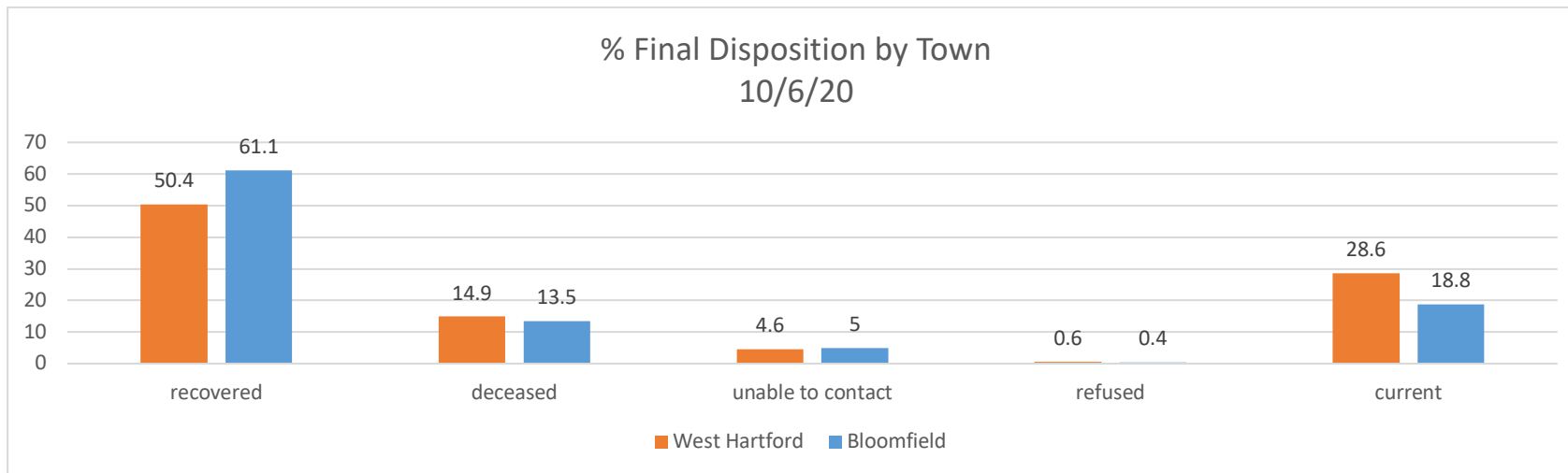
All data are preliminary and subject to change. Updated 10-6-2020.



All data are preliminary and subject to change. Updated 10-6-2020.



*Race is reported from testing data received

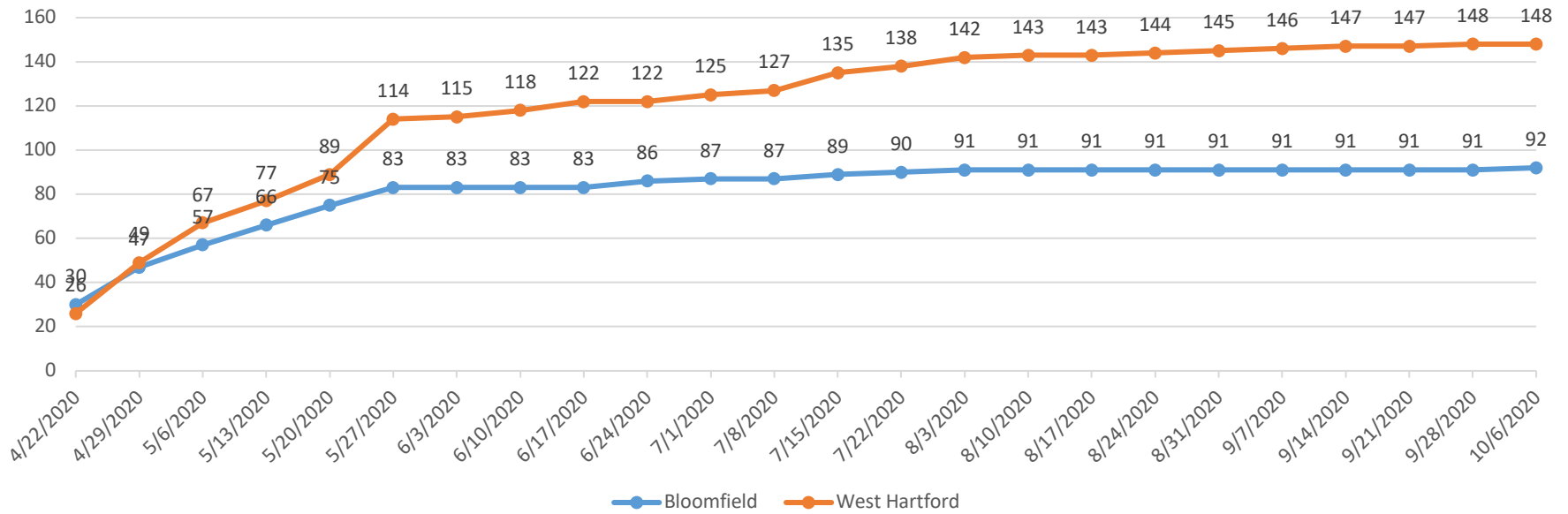


*recovered = disease resolved

Current = continue to follow

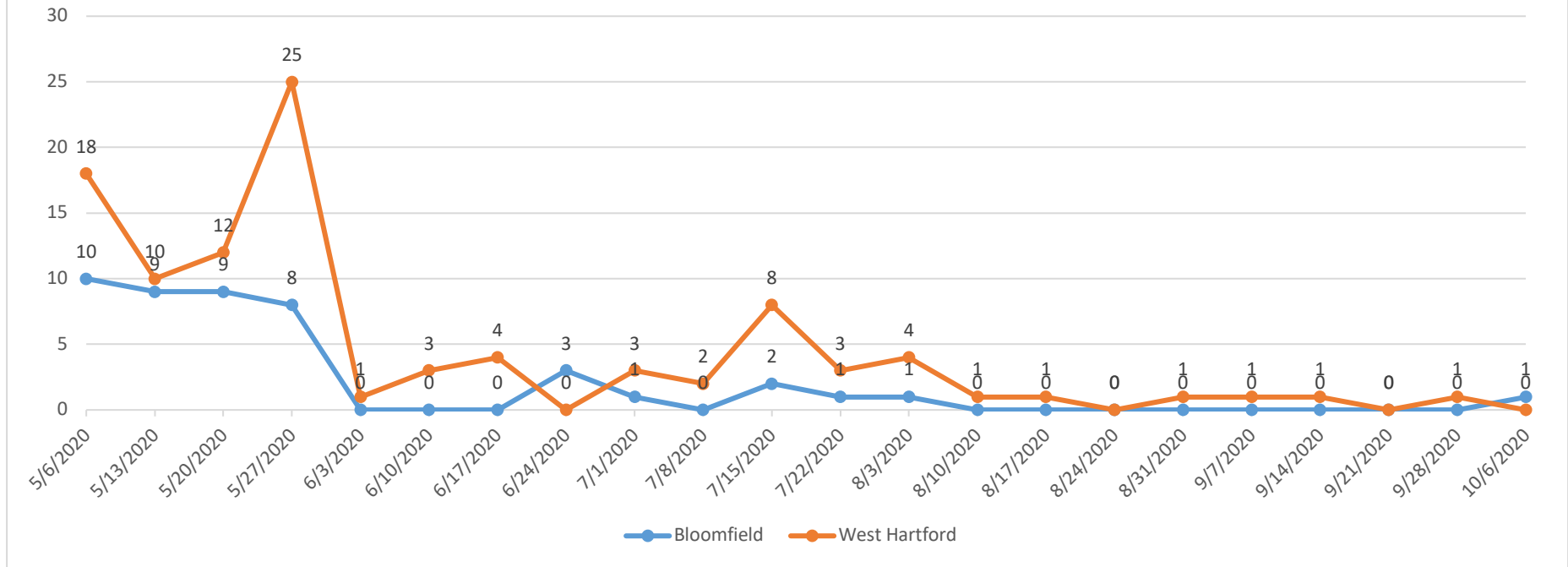
All data are preliminary and subject to change. Updated 10-6-2020.

Total Deaths by Town 10/6/20

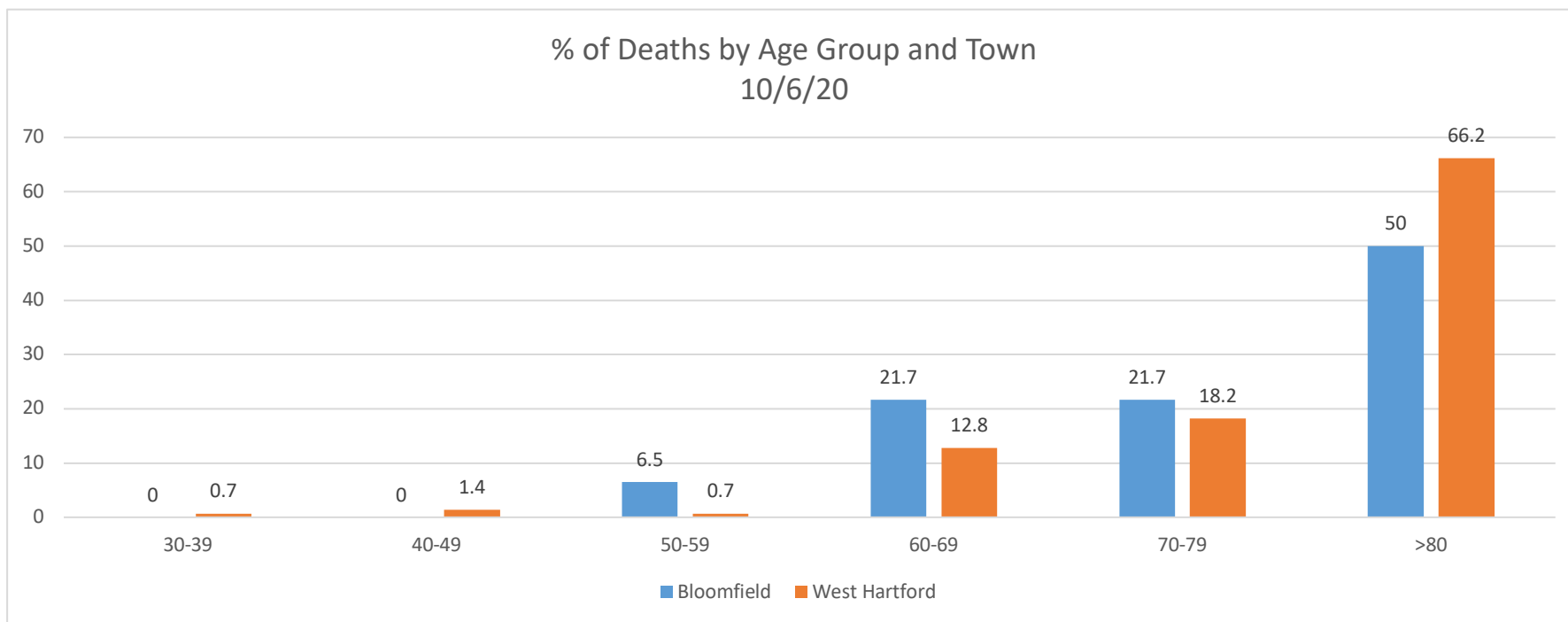
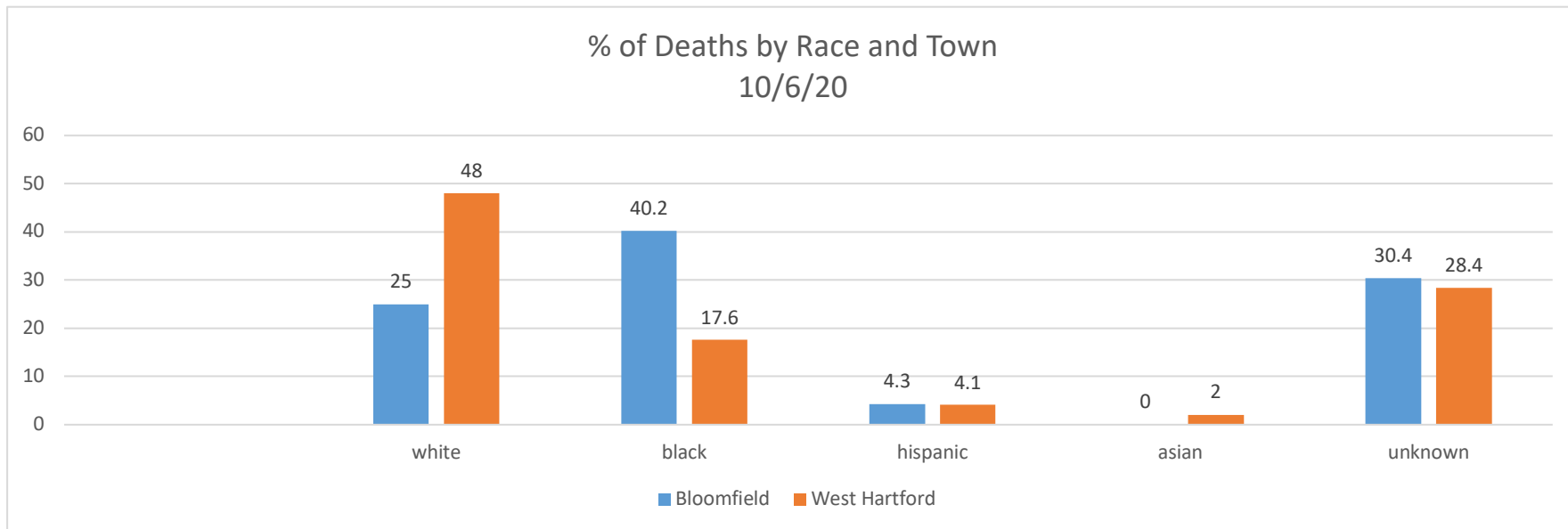


All data are preliminary and subject to change. Updated 10-6-2020.

New Deaths by Town 10/6/20

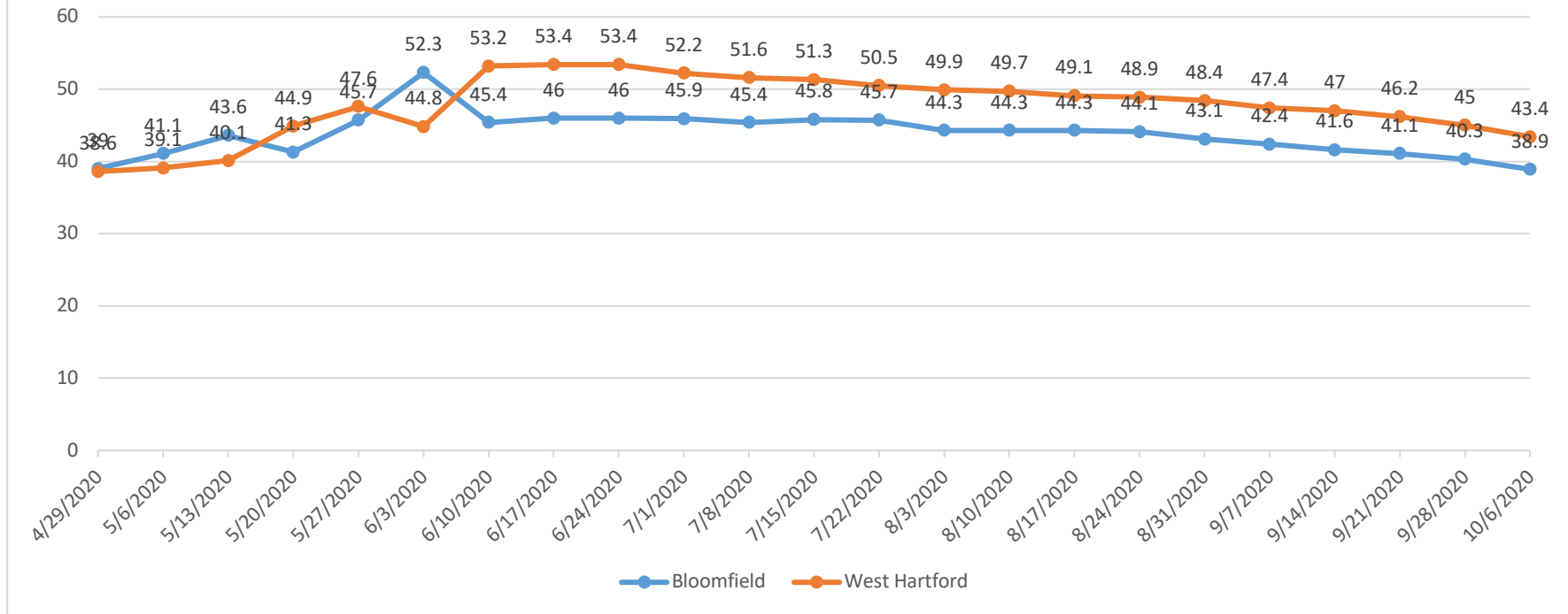


All data are preliminary and subject to change. Updated 10-6-2020.

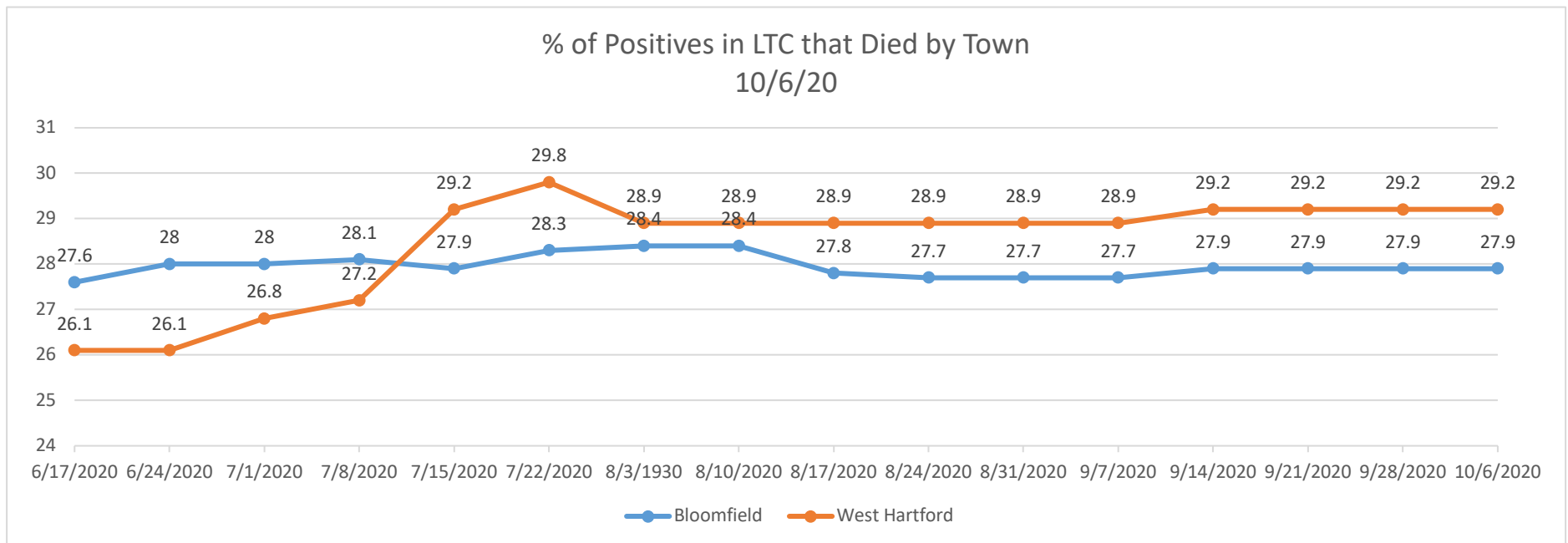
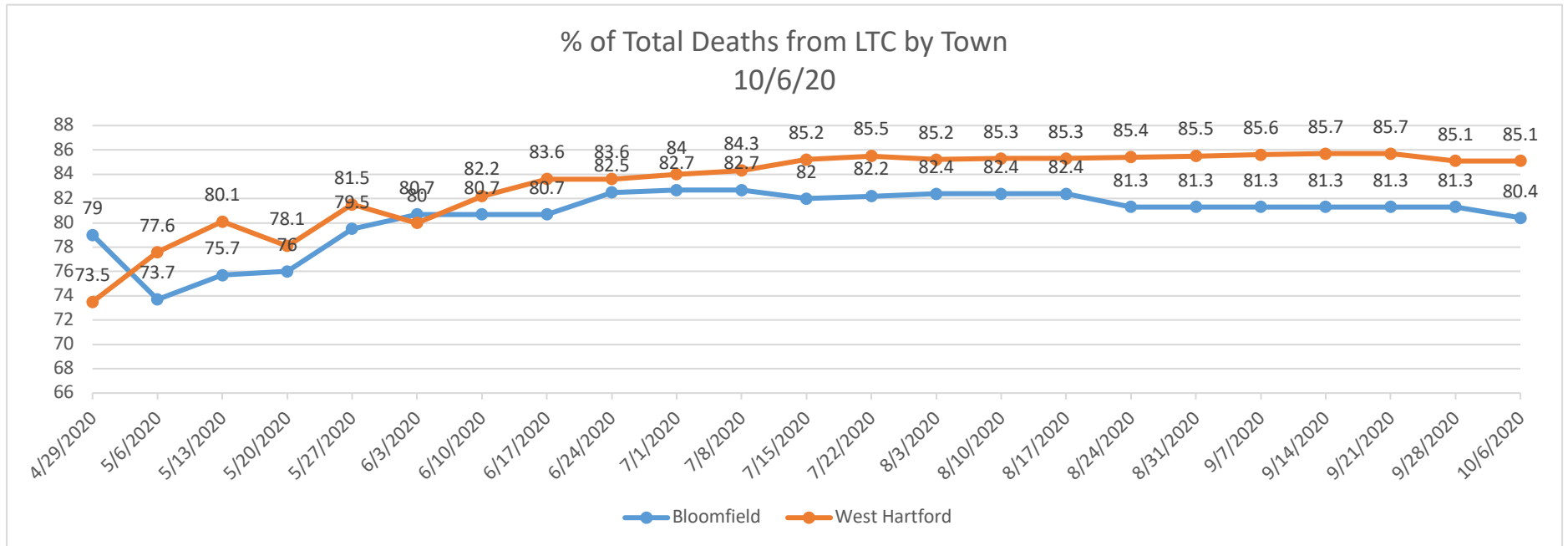


All data are preliminary and subject to change. Updated 10-6-2020.

% of Total Positives from LTC by Town 10/6/20



All data are preliminary and subject to change. Updated 10-6-2020.



All data are preliminary and subject to change. Updated 10-6-2020.