

# PickUp & TakeOut

Current Locations	Proposed Locations
Farmington Ave EB	Farmington Ave EB
4 sp by 965..967	3 sp by 965..967
3 sp by 995..999	3 sp by 995..999
Farmington Ave WB	Farmington Ave WB
2 sp by 968	3 sp by 970..974
2 sp by 970	

**Note:**

On-street configuration on Farmington Ave will return to parallel parking after the week of 09NOV2020.

Max, Ichiro & Chipotle have designated take-out spaces in Brace Lot.

# PickUp & TakeOut: Farmington Ave



# PickUp & TakeOut

Current Locations	Proposed Locations
Lasalle Rd	Lasalle Rd
2 sp by 21	2 sp by 21
4 sp by 60	2 sp by 30
	3 sp by 76
South Main St	South Main st
4 sp by 7	3 sp by 7
1 sp by 13	2 sp by 13
5 sp by 44	4 sp by 44

---

# PickUp & TakeOut: LaSalle & SMain



# PickUp & TakeOut

Current Locations	Proposed Locations
Memorial Rd	Memorial Rd
2 sp by 111	2 sp by 111
3 sp by 54	2 sp by 65
	1 sp by 54
Isham Rd	Isham Rd
1 sp by 62	2 sp by 62
Webster Walk stage	1 by 75

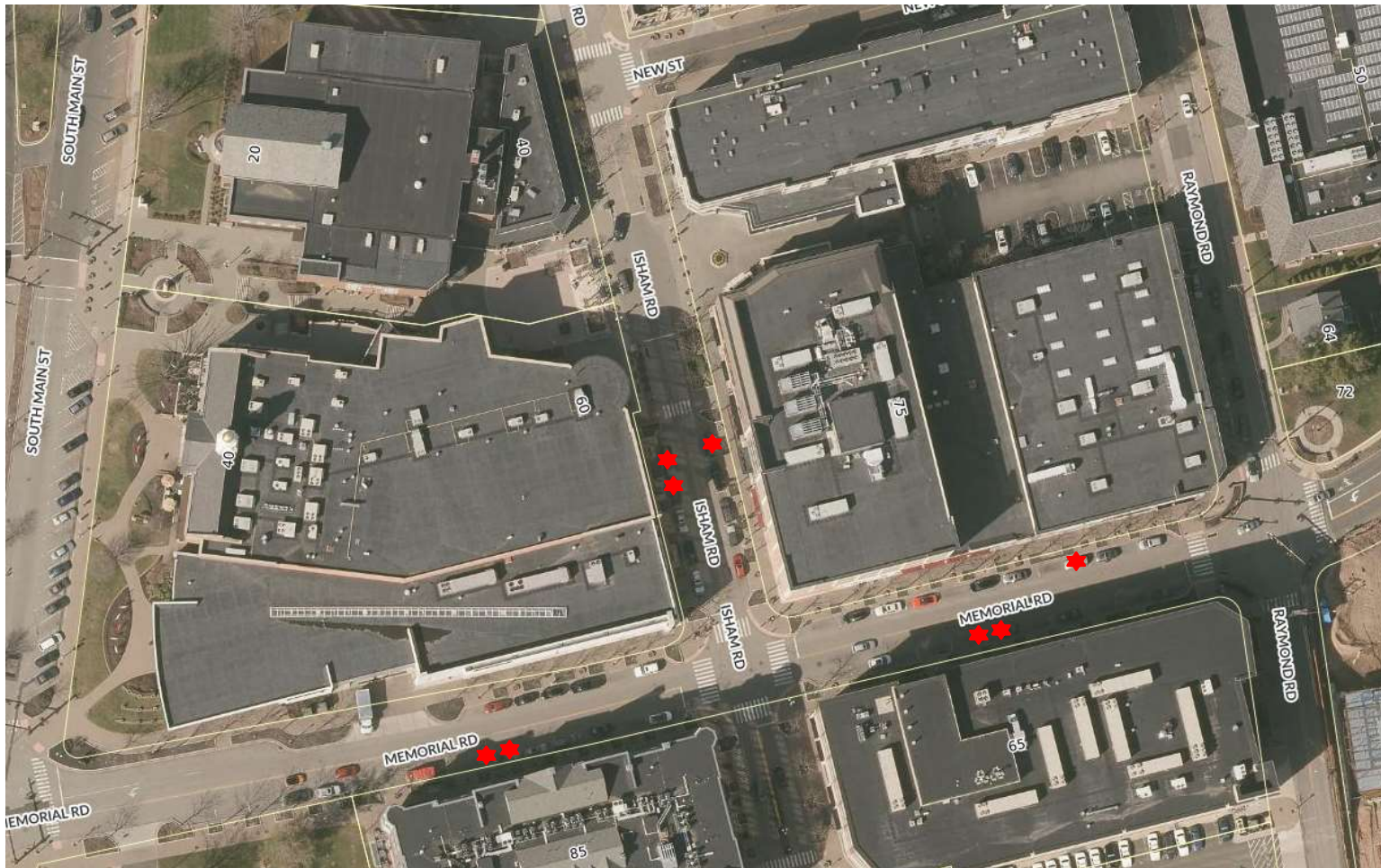
**Note:**

West Elm has 1 space in driveway leading to Memorial G and 2 spaces inside the garage.

Area by Webster Walk stage returns to Fire Lane.

Cheesecake has 2 spaces in Raymond Lot.

# PickUp & TakeOut: Isham & Memorial



# PickUp & TakeOut in Total

Total spaces reserved for Pickup & Takeout: 33

*Total number of spaces remain unchanged. Changes apply to the locations of the signage to better service businesses given outdoor dining is no longer in the streets.*

Farmington Ave	9 spaces
Lasalle Rd	7 spaces
Smain St	9 spaces
Memorial Rd	5 spaces
Isham Rd	3 spaces

Costs to PLF: \$16,000/month

*Valued at \$20/space/day and 24 days/month*